

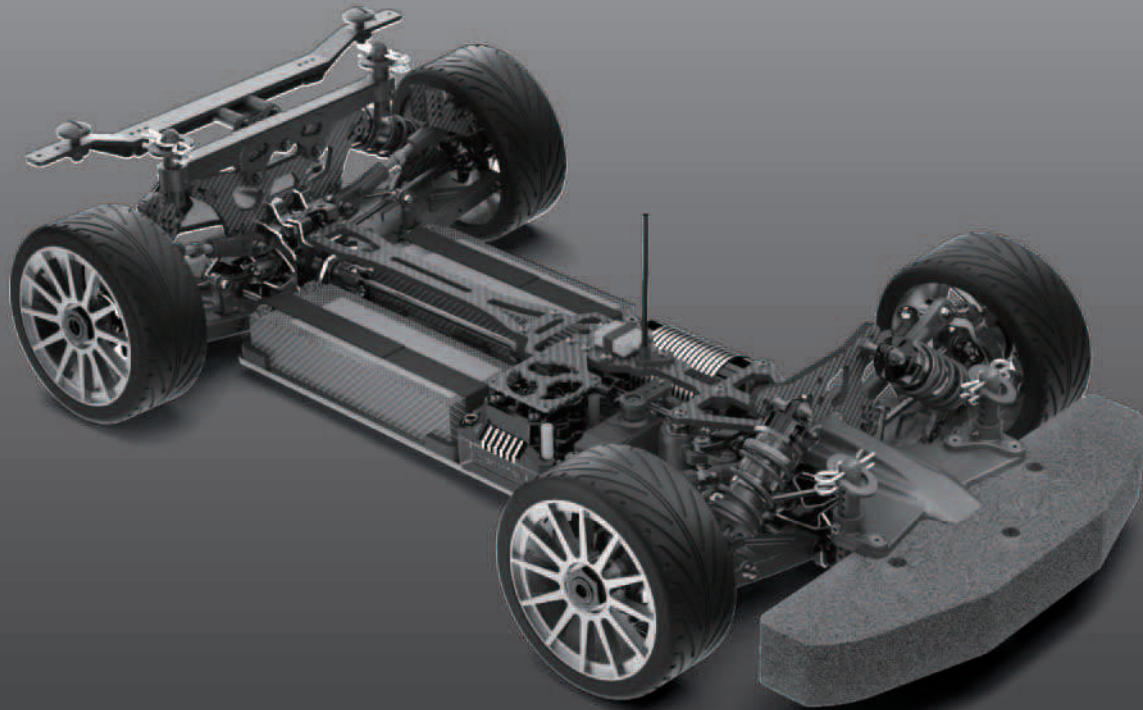
4WD  
FOUR WHEEL DRIVE

KIT  
PROFESSIONAL SPEC

# X3 GT

## 2023

### E



## 1/8 ELECTRIC POWERED GT PRO KIT

### INSTRUCTION MANUAL

#### Accessories

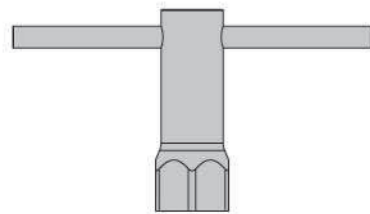
- Complete CVA Driveshaft
- Complete High Performance Bearing Set
- Two Piece Set CNC Alum. Motor Mount
- 7075 CNC Lightweight Chassis
- 7075 CNC Rear Hubs
- 7075 CNC Suspension Bracket (FF/FR)
- 16mm Large Shock Absorber
- 4mm Carbon Fiber Shock Tower (F/R)
- Larger Anti-Collision Sponge
- Servo Holder, Alum.
- Rear Body Fasten Set
- High Hardened Steel Shock Spring
- Front And Rear Sealed Differential
- CNC Machined Hardened 13 Tooth Bevel Pinion Gear
- CNC Machined Hardened 43 Tooth Bevel Gear
- Removable For Easy Of Cleaning The Car
- 7075 CNC C Hub, 10 Degree
- Aluminum 7075 CNC Bulkhead (F/R)
- Diff Cap Joint (Lightweight)

**KIT IN BOX MAY DIFFER FROM PICTURE SHOWN.  
ALL SPECIFICATIONS SUBJECT TO CHANGE WITHOUT PRIOR NOTIC.**

**mit**  
MADE IN TAIWAN

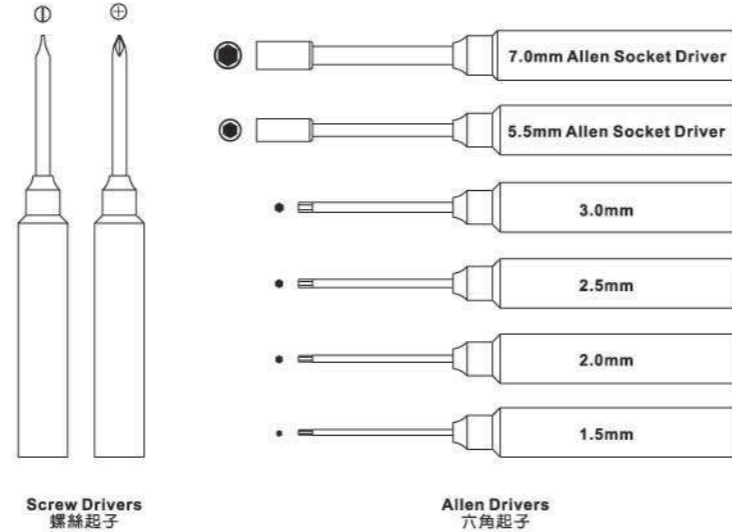
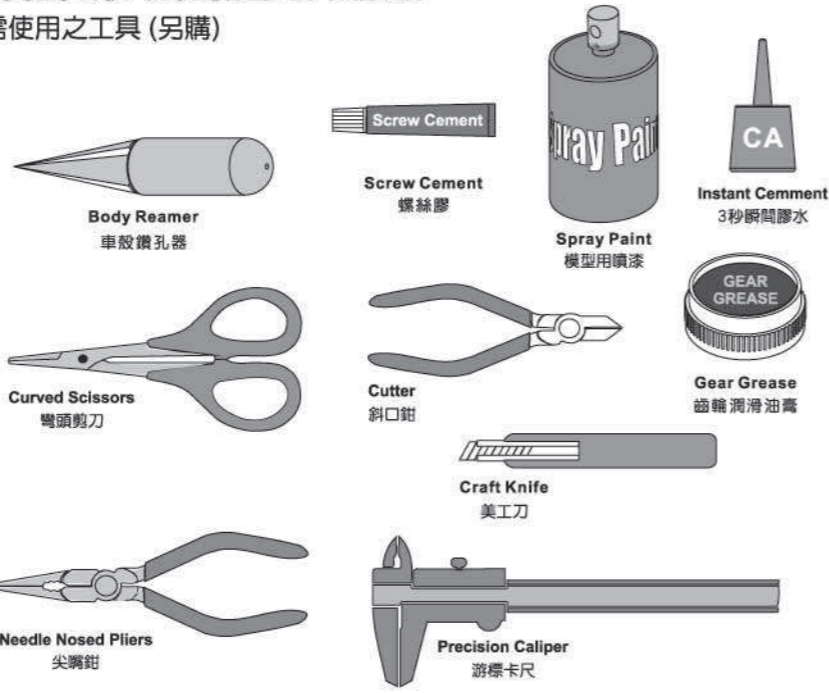
INCLUDED ITEMS

附帶用品



TOOLS NOT INCLUDED IN THE KIT

需使用之工具(另購)



<p><b>C-27 Servo Fixing</b></p> <p>1pcs</p>	<p><b>DM-31 Single Spur Gear Mount (For:44-46T)</b></p> <p>1pcs</p>	<p><b>XT-31 Center Diff. Mount</b></p> <p>1pcs</p>	<p><b>X1-31 Shock Ball End Post / One-piece / Top</b></p> <p>4pcs</p>
<p><b>X3-01 Spiral Bevel Gear 43T</b></p> <p>1pcs</p>	<p><b>X3-02 Spiral Bevel Gear 13T</b></p> <p>1pcs</p>	<p><b>X3-03 Diff. Gear 10Tx4, 20Tx2, 0.15mmx4</b></p> <p>2pcs 4pcs 4pcs</p>	<p><b>X3-04 Front wheel CVD Shaft Set, 107.5mm</b></p> <p>2pcs 2pcs 2pcs</p>
<p><b>X3-04A Front Wheel CVD Shaft, 107.5mm</b></p> <p>2pcs</p>	<p><b>X3-05 Rear Wheel CVD Shaft Set, 105mm</b></p> <p>2pcs 2pcs 2pcs</p>	<p><b>X3-05A Rear Wheel CVD Shaft, 105mm</b></p> <p>2pcs</p>	<p><b>X3-06 Drive Shaft Insert / 2.5x12.8 Pin</b></p> <p>4pcs 4pcs</p>
<p><b>X3-07 CVD Wheel Axle</b></p> <p>2pcs</p>	<p><b>X3-13 3.5 x 45.8 Rear Upright Shaft</b></p> <p>2pcs</p>	<p><b>X3-14 Steering King Pin</b></p> <p>4pcs</p>	<p><b>X3-16 Servo Saver Post</b></p> <p>2pcs</p>
<p><b>X3-17 Alum. Servo Saver Tube</b></p> <p>1pcs</p>	<p><b>X3-19-BK Servo Saver Adjuster, 12 x 1.7 O-Ring</b></p> <p>1pcs 1pcs</p>	<p><b>X3-20-BK Servo Saver Connecting Plate, BType</b></p> <p>1pcs</p>	<p><b>X3-21 Servo Saver Screw</b></p> <p>4pcs</p>
<p><b>X3-22 Servo Saver Bushing</b></p> <p>2pcs</p>	<p><b>X3-31 7x8.5mm Ball &amp; Socket</b></p> <p>4pcs</p>	<p><b>X3-32 7x12mm Ball &amp; Socket</b></p> <p>4pcs</p>	<p><b>X3-34 2.5x11.8 Pins</b></p> <p>10pcs</p>
<p><b>X3-35 2.5x12.8 Pin</b></p> <p>10pcs</p>	<p><b>X3-38 Diff Gasket 31x20x0.3</b></p> <p>3pcs</p>	<p><b>X3-40 4x10mmSet Screw, Round Head</b></p> <p>4pcs</p>	<p><b>X3-43 Diff. Case (F&amp;R)</b></p> <p>1pcs 1pcs</p>
<p><b>X3-45 Front Lower Arms L&amp;R</b></p> <p>1pcs</p>	<p><b>X3-45B Front Arm Bushing</b></p> <p>4pcs</p>	<p><b>X3-46 Suspension Eccentric Bushing</b></p> <p>1pcs</p>	<p><b>X3-47 Steering Knuckle Arm L,R</b></p> <p>1pcs</p>

Equipment Needed 另購品

Transmitter 遙控器

UM-3 Batteries 3號乾電池

Brushless Electric Speed Controller 無刷式電子變速器

Brushless Motor 無刷馬達

7.4V Li-Po Battery(Hard Case) 7.4V 鋰充電電池組(硬殼)

Li-Po Battery Charger 鋰電池專用充電器

Servo 伺服器

Receiver 接收器

PARTS REFERENCE 零件圖2

<p><b>X3-50</b> Plastic Rod End</p> <p>1pcs</p>	<p><b>X3-51</b> Servo Saver Set/Front Top Deck</p> <p>1pcs</p>	<p><b>X3-53</b> Rear Lower Arms L&amp;R</p> <p>1pcs</p>	<p><b>X3-61</b> 8x14 Ball Bearing</p> <p>4pcs</p>
<p><b>X3-62</b> 13x20 Ball Bearing</p> <p>4pcs</p>	<p><b>X3-82</b> Front &amp; Rear Bumper</p> <p>1pcs</p>	<p><b>X3-84</b> Body Mount</p> <p>1pcs</p>	<p><b>X3-89</b> Rear Anti-roll Bar 2.8mm</p> <p>1pcs</p>
<p><b>X3.6-07</b> 4x68mm Arms Shaft</p> <p>2pcs</p>	<p><b>X3GT-11</b> Servo Saver Spring - Hard</p> <p>1pcs</p>	<p><b>X3GT-18C</b> 3mm Carbon front shock end plate</p> <p>1 pcs 1 pcs</p>	<p><b>X3GT-18D</b> 3mm Carbon Rear shock end plate</p> <p>1 pcs 1 pcs</p>
<p><b>X3GT-18E</b> 3mm Washer</p> <p>1 pcs 1 pcs</p>	<p><b>X3GT-22</b> Front Anti-roll Bar 2.5mm, Black</p> <p>1pcs</p>	<p><b>X3GT-29</b> CNC DIFF. CASE L,R</p> <p>1 pcs 1 pcs</p>	<p><b>X3GT-30</b> CNC Bearingblock L,R</p> <p>1 pcs 1 pcs</p>
<p><b>X3GT-31</b> CNC 7075 Suspension Bracket,FF</p> <p>1pcs</p>	<p><b>X3GT-34</b> CNC 7075 Suspension Bracket,RR</p> <p>1pcs</p>	<p><b>X3GT-36A</b> Front Shock Tower</p> <p>1pcs</p>	<p><b>X3GT-36B</b> Rear Shock Tower</p> <p>1pcs</p>
<p><b>X3GT-39</b> Main Cup Joint Axle</p> <p>1pcs</p>	<p><b>X3GT-40</b> Cup Joint For Planet Gear</p> <p>2pcs</p>	<p><b>X3GT-43</b> Topdeck Carbon</p> <p>2pcs 1pcs</p>	<p><b>X3GT-45</b> CNC 7075 Suspension Bracket,FR(+6°)</p> <p>1pcs</p>
<p><b>X3GT-46</b> CNC 7075 Suspension Bracket,RF(+2°)</p> <p>1pcs</p>	<p><b>X3GT-47</b> CNC 7075-3mm Light Weight Chassis</p> <p>1pcs</p>	<p><b>X3GT-48</b> Front Top Deck, Carbon</p> <p>1pcs</p>	<p><b>X3GT-49</b> Rear Top Deck, Carbon</p> <p>1pcs</p>
<p><b>X3GT-50</b> CNC Chassis Brace Mount</p> <p>1pcs</p>	<p><b>X3GT-51</b> Center Diff Upper Cap, Alum.</p> <p>1pcs</p>	<p><b>X3GT-52</b> Servo Holder, Alum.</p> <p>2pcs</p>	<p><b>X3GT-53</b> Steering Servo Saver, Alum.</p> <p>1pcs</p>

PARTS REFERENCE 零件圖3

<p><b>X3GT-57</b> Fan Mounting Carbon Plate for 40mm Fan</p> <p>1pcs</p>	<p><b>X3GT-58</b> 81.5mm Central Shaft</p> <p>1pcs</p>	<p><b>X3S-04</b> Diff. Cap Joint (Lightweight)</p> <p>2pcs</p>	<p><b>X3S-15</b> 17mm Wheel Hub + 1.9mm</p> <p>2pcs</p>
<p><b>X3S-19</b> CNC C HUB , 10 Degree L,R</p> <p>SNN3 2 pcs SB3x18 2 pcs</p>	<p><b>X3S-49</b> Alum Rear Wheel Hub, Carbon Plate(GT)</p> <p>1pcs 1pcs 4pcs SB3x6 8pcs</p>	<p><b>XT-09B</b> 125.5mm Center Shaft</p> <p>1pcs</p>	
<p><b>XT-31</b> Central Diff Lower Mount</p> <p>1pcs</p>	<p><b>#294D</b> 46T 2nd Spur Gear</p> <p>1pcs</p>	<p><b>#309B</b> Aluminum Nut (Clockwise)</p> <p>1 pcs</p>	<p><b>#387C-BK</b> 16mm shock cap (Black Anodize)</p> <p>4pcs</p>
<p><b>#397-17</b> 17T Motor Gear</p> <p>1pcs</p>	<p><b>#415BK</b> CNC Alum Motor Mount</p> <p>1pcs</p>	<p><b>#445</b> Battery Straps, Black</p> <p>2pcs</p>	<p><b>#446</b> Antenna Holder</p> <p>1pcs</p>
<p><b>#447</b> Battery Mount</p> <p>2pcs 2pcs 2pcs</p>			
<p><b>X3.6-33</b> Aluminum Center Diff Brace <b>OPT</b></p> <p>1pcs</p>	<p><b>X3S-16</b> Rear Upright 3.5mm <b>OPT</b></p> <p>2pcs</p>	<p><b>X3S-18</b> Titanium TurnBuckle <b>OPT</b></p> <p>3x36-1pcs 5x35-4pcs 4x46-2pcs</p>	<p><b>X3S-20</b> Alum. CNC C Hub (12°) L, R <b>OPT</b></p> <p>1pcs 1pcs 3x18 Nut 2pcs 2pcs</p>

**PARTS REFERENCE 零件圖 4**

<b>X3S-33</b> Front Wheel Hub Set 1pcs 1pcs 1pcs 1pcs SB3x6 4pcs <b>OPT</b>	<b>X3S-38</b> Carbon Fiber Ackerman , A 1 pcs F4x7x2.5mm 2 pcs <b>OPT</b>	<b>X3S-39</b> Carbon Fiber Ackerman , B 1 pcs F4x7x2.5mm 2 pcs <b>OPT</b>	
<b>X3S-40</b> Carbon Fiber Ackerman , C 1 pcs F4x7x2.5mm 2 pcs <b>OPT</b>	<b>X3S-41</b> Aluminum Diff Case Set 1pcs SW 6X15X0.2MM 1pcs SW 4X10X0.15MM 4pcs <b>OPT</b>	<b>X3S-44</b> Alum Servo Saver Set 1pcs SNN3 2pcs 2pcs 2pcs <b>OPT</b>	
<b>X3S-45</b> 7075 Alum CVD Wheel Axle 1pcs <b>OPT</b>	<b>X3GT-08</b> CNC C Hub, 0 Degree 1pcs 1pcs 2pcs 2pcs SB3x18 M3 Nut <b>OPT</b>	<b>X3GT-09S</b> 16mm Shock Spring-Soft 4pcs <b>OPT</b>	<b>X3GT-10S</b> 16mm Shock Spring-Hard 4pcs <b>OPT</b>
<b>X3GT-19</b> CNC 7075 Front Top Deck 1pcs <b>OPT</b>	<b>X3GT-20</b> Front Anti-roll Bar 2.3mm,black 1pcs ∅2.3 <b>OPT</b>	<b>X3GT-21</b> Rear Anti-roll Bar 2.3mm,black 1pcs ∅2.3 <b>OPT</b>	<b>X3GT-23</b> Rear Anti-roll Bar 2.5mm,black 1pcs ∅2.5 <b>OPT</b>
<b>X3GT-25</b> CNC C HUB , 6 Degree L.R 1 pcs 1 pcs 2 pcs 2 pcs SB3x18 M3 Nut <b>OPT</b>	<b>X3GT-54</b> Balance Block, 20g 1pcs SF3x6 1pcs <b>OPT</b>	<b>DM-27</b> Single Spur Gear Mount (For:47-49T) 1pcs <b>OPT</b>	<b>#294A</b> 49T 1st Spur Gear 1pcs <b>OPT</b>
<b>#294E</b> 45T 2nd Spur Gear 1pcs <b>OPT</b>	<b>#294F</b> 44T 2nd Spur Gear 1pcs <b>OPT</b>	<b>#397-13</b> 13T Motor Gear <b>#397-14</b> 14T Motor Gear <b>#397-15</b> 15T Motor Gear <b>#397-16</b> 16T Motor Gear <b>#397-18</b> 18T Motor Gear <b>#397-19</b> 19T Motor Gear <b>#397-20</b> 20T Motor Gear <b>#397-21</b> 21T Motor Gear 1pcs <b>OPT</b>	<b>#398-X3</b> Alum Ball Set 6mm 8pcs 6mm 4pcs 6mm 2pcs 7mm 4pcs 7mm 4pcs 7mm 4pcs <b>OPT</b>
<b>#434</b> Lightweight Ball End Post 4 pcs <b>OPT</b>	<b>#440</b> Aluminum Shock Body Seal Retainer 4 pcs <b>OPT</b>	<b>#418A-T</b> Shock Shaft, TI Coating 2 pcs <b>OPT</b>	<b>OPT</b>

**SYMBOLS USED THROUGHOUT THE INSTRUCTION MANUAL**  
說明書附註使用標示

Parts Bag Used 使用零件包裝袋	Degrease With Motor Spray 使用清潔噴劑	Do Not Over Tighten 請勿鎖緊物件	Tighten 鎖緊物件	Ensure Free Movement 確定可自由活動	Contact Adhesive 使用強力接著劑
Apply Screw Cement 使用螺絲膠	Apply Oil 塗上潤滑油	Apply Lubricant 塗上潤滑黃油	1:1 True-To-Scale 1:1原寸圖	Time 時間	Pay attention here 注意事項

**1 ASSEMBLY OF THE FRONT AND REAR DIFF. 前後差速齒輪組合**

**Build two differentials for front and rear.**  
請組合兩個差速器為前後使用。

**NO.1** **x2**

**Step 1** **Step 2** **Step 3** **Step 4** **Step 5**

**DIFF OIL**

**● Use the Diff. Oil #300000 for front and #50000 for rear.**  
前差速器請使用 #300000 差速油，後差速器請使用 #50000 差速油。  
**● Use White Oil pen mark front diff. case and rear diff. case.**  
使用白色油漆筆標記前差速殼與後差速殼。

**Step 1 detail**  
步驟 1 細節

**Step 2 detail**  
步驟 2 細節

**Step 4 detail**  
步驟 4 細節

**Step 5 detail**  
步驟 5 細節

**After assembly the differential should be 30.35mm measured from the ends of the installed ball-bearings. If differential is longer, hold the bevel gear and retighten the 4 screws.**  
組裝完成後測量兩端滾珠培林差距應在30.5mm。如果差距更長，應重新鎖緊大傘齒上的4根螺絲。

**0 10 20 30 40 50 mm**

**Parts List:**

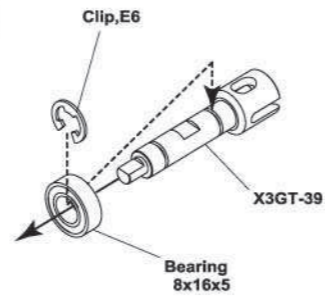
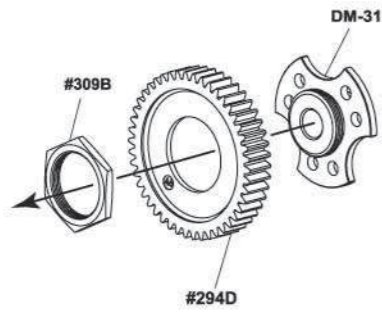
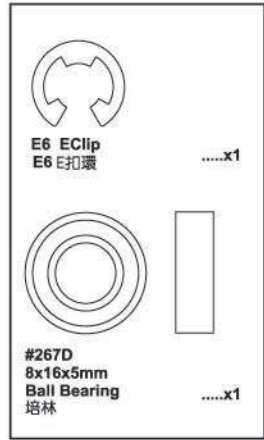
- X3-34 2.5x11.8mm Pin 滾針 .....x4
- J-03A P6 O-Ring P6 O環 .....x4
- #267D 8x16x5mm Ball Bearing 培林 .....x4
- SW 4x8x0.25 4x8x0.25mm Washer 墊片 .....x8
- #363 4mm Alum. Cross Pin 鋁十字軸心 .....x4
- SF3x12mm Flat Head Hex Screw 皿頭內六角螺絲 .....x8

**2 ASSEMBLY OF SPUR GEAR UNIT**  
大齒輪組立

**BAG NO.5**

Step 1

Step 2

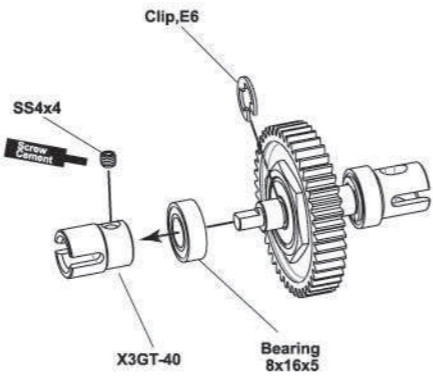
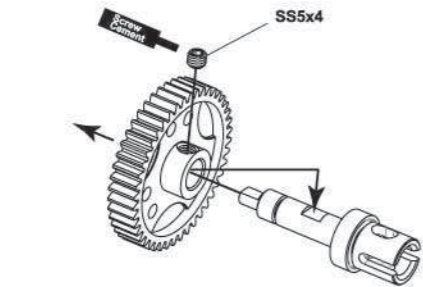
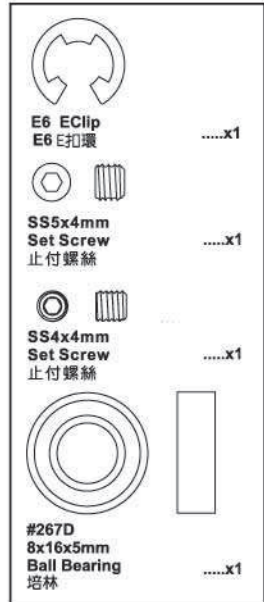


**3 ASSEMBLY OF SPUR GEAR UNIT**  
大齒輪組立

**BAG NO.5**

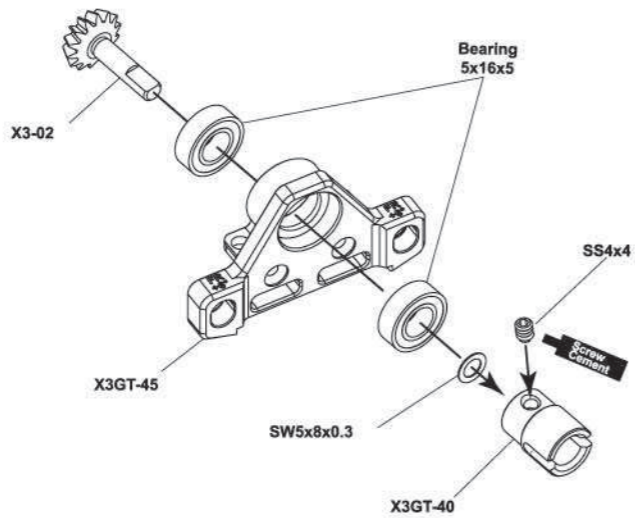
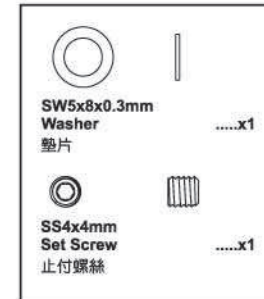
Step 1

Step 2



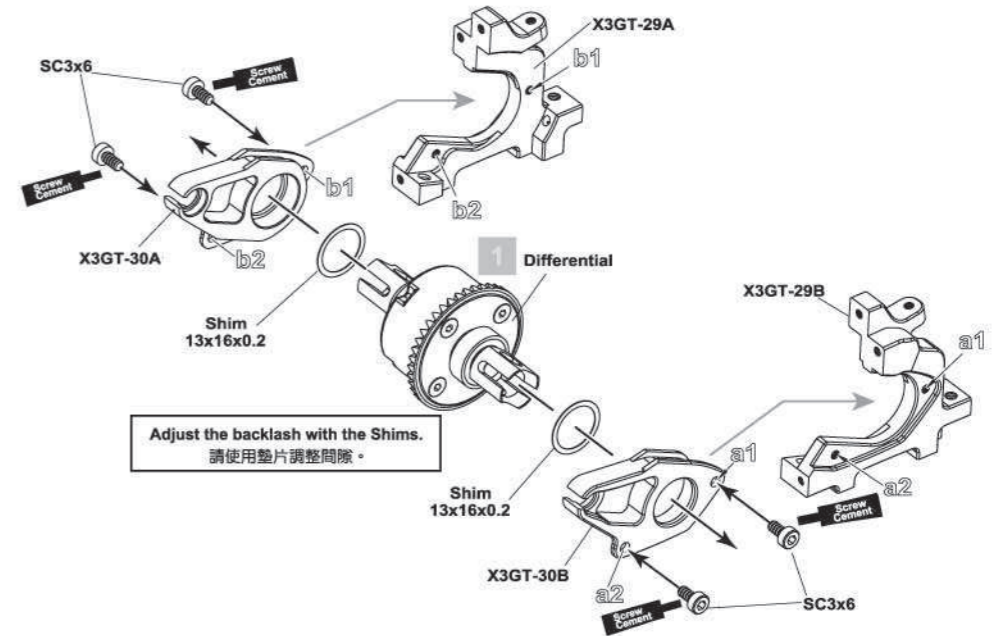
**4 ASSEMBLY OF THE FRONT PINION GEAR**  
前小傘齒組合

**BAG NO.2**



**5 ASSEMBLY OF THE FRONT DIFFERENTIAL INTO GEAR CASE**  
前差速器與齒輪箱組合

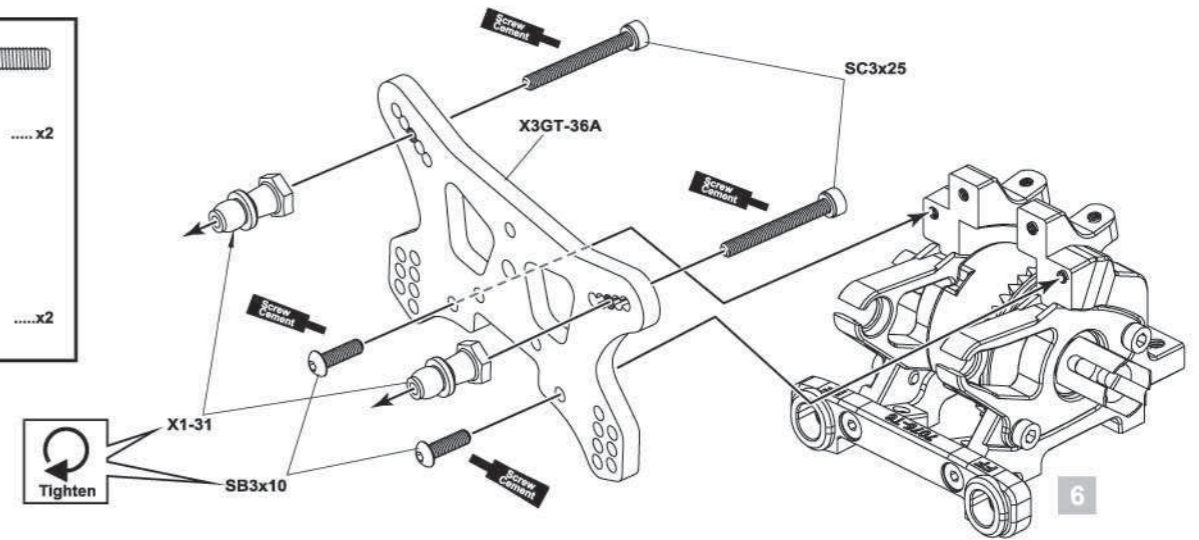
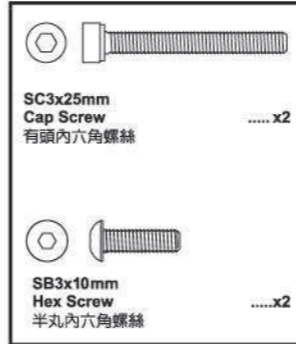
**BAG NO.2**



Adjust the backlash with the Shims.  
請使用墊片調整間隙。

**7 ASSEMBLY OF THE FRONT SHOCK STAY**  
前油壓架組合

**BAG NO.2**



### 8 ASSEMBLY OF THE FRONT LOWER ARMS 前下擺臂組合

BAG NO.2

Right side  
右側

Step detail  
步驟細節



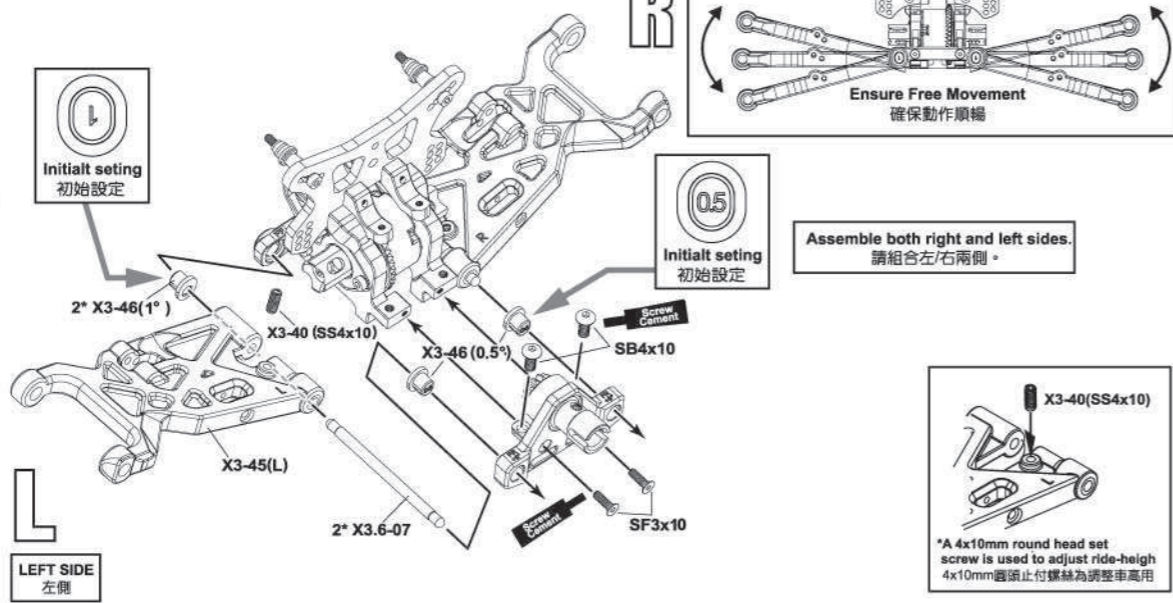
Ensure Free Movement  
確保動作順暢

Initial setting  
初始設定

0.5  
Initial setting  
初始設定

Assemble both right and left sides.  
請組合左/右兩側。

- SB 4x10mm Hex Screw  
半丸內六角螺絲 .....x2
- SF 3x10mm Flat Head Hex Screw  
血頭內六角螺絲 .....x2
- X3-40 4x10mm Round Head Set Screw  
圓頭付螺絲 .....x2



\*A 4x10mm round head set screw is used to adjust ride-height  
4x10mm圓頭止付螺絲為調整車高用

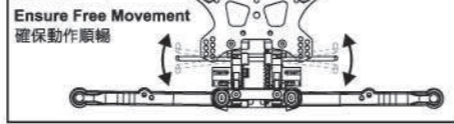
### 9 ASSEMBLY OF THE FRONT STABILIZER 前平衡桿組合

BAG NO.2

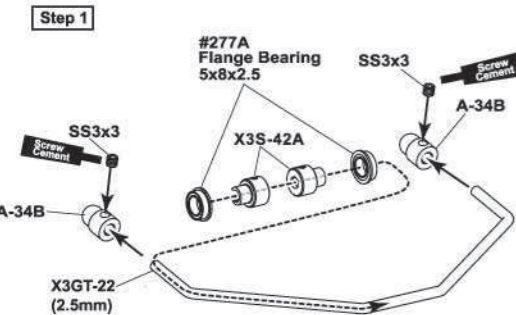
Step 1

Step 2

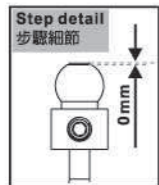
Step detail  
步驟細節



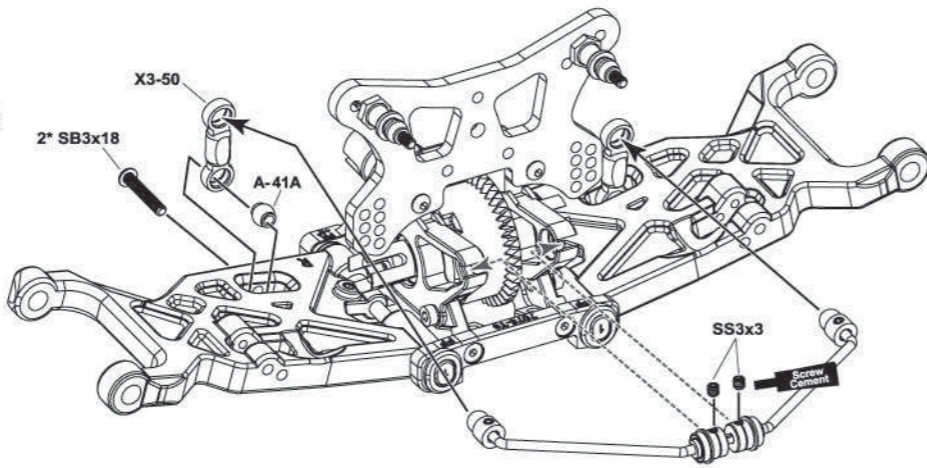
Ensure Free Movement  
確保動作順暢



- SB3x18mm Hex Screw  
半丸內六角螺絲 .....x2
- SS3x3mm Set Screw  
止付螺絲 .....x4



0mm



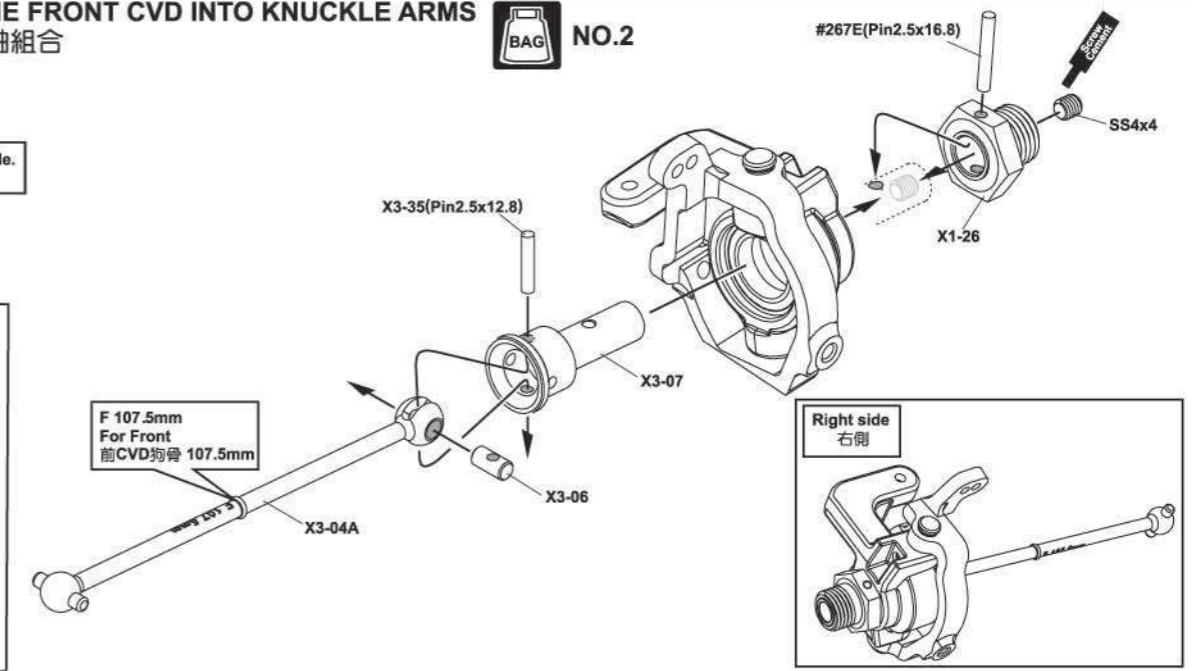
### 11 ASSEMBLY OF THE FRONT CVD INTO KNUCKLE ARMS 轉向座與CVD傳動軸組合

BAG NO.2

LEFT SIDE  
左側

Assemble both right and left side.  
請組合左/右兩側。

- X3-35 2.5x12.8mm Pin  
滾針 .....x2
- #267E 2.5x16.8mm Pin  
滾針 .....x2
- SS4x4mm Set Screw  
止付螺絲 .....x2



### 12 ASSEMBLY OF THE KNUCKLE ARMS ONTO FRONT LOWER ARMS 組合前轉向座至下擺臂

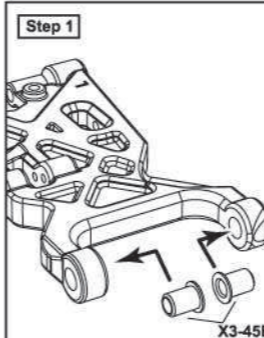
BAG NO.2

Assemble both right and left sides.  
請組合左/右兩側。

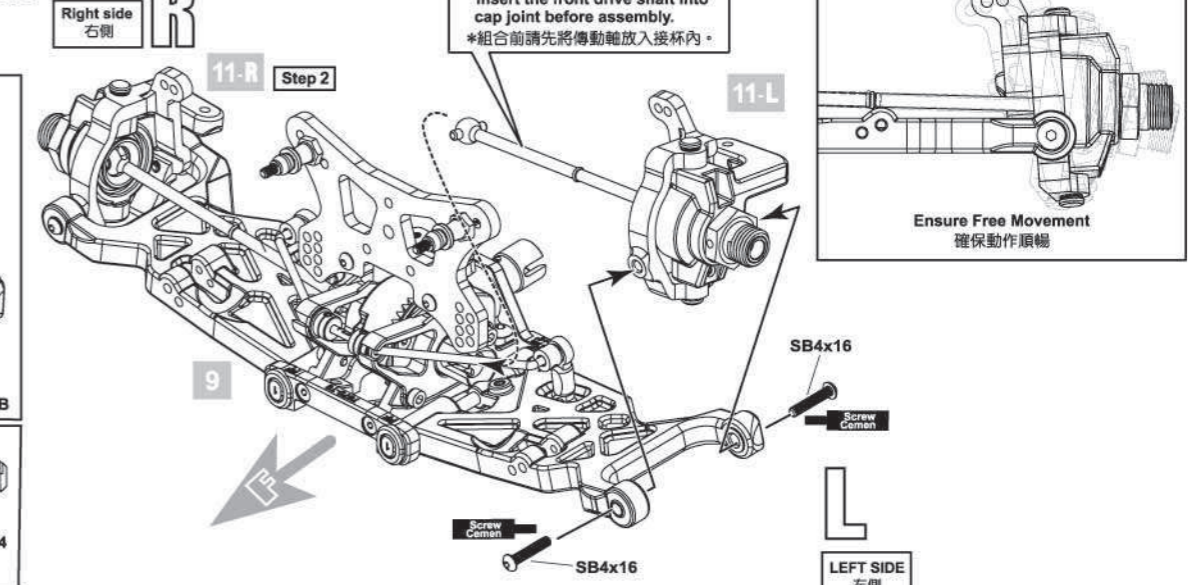
Step detail  
步驟細節



Ensure Free Movement  
確保動作順暢



- SB4x16mm Hex Screw  
半丸內六角螺絲 .....x4



### 10 ASSEMBLY OF THE FRONT KNUCKLE ARMS 轉向座組合

BAG NO.2

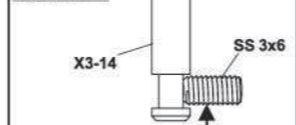
LEFT SIDE  
左側

Step 1

Step 2

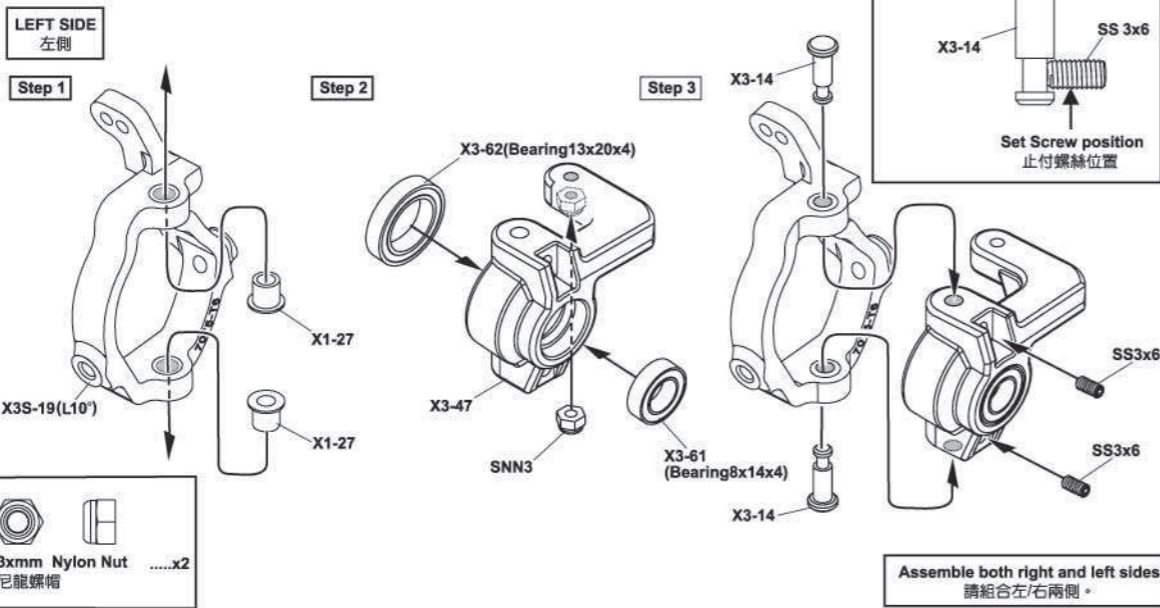
Step 3

Step detail  
步驟細節



Set Screw position  
止付螺絲位置

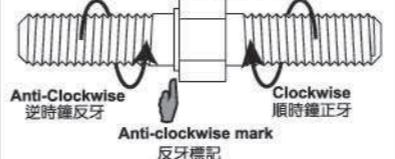
- X3-62 13x20x4mm Ball Bearing  
培林 .....x2
- X3-61 8x14x4mm Ball Bearing  
培林 .....x2
- SS3x6mm Set Screw  
付螺絲 .....x4
- 3x3mm Nylon Nut  
尼龍螺帽 .....x2



### 13 ASSEMBLY OF THE FRONT UPPER ARMS 前上拉桿組合

BAG NO.2

Step detail  
步驟細節



Note the locking direction!  
注意鎖緊方向!

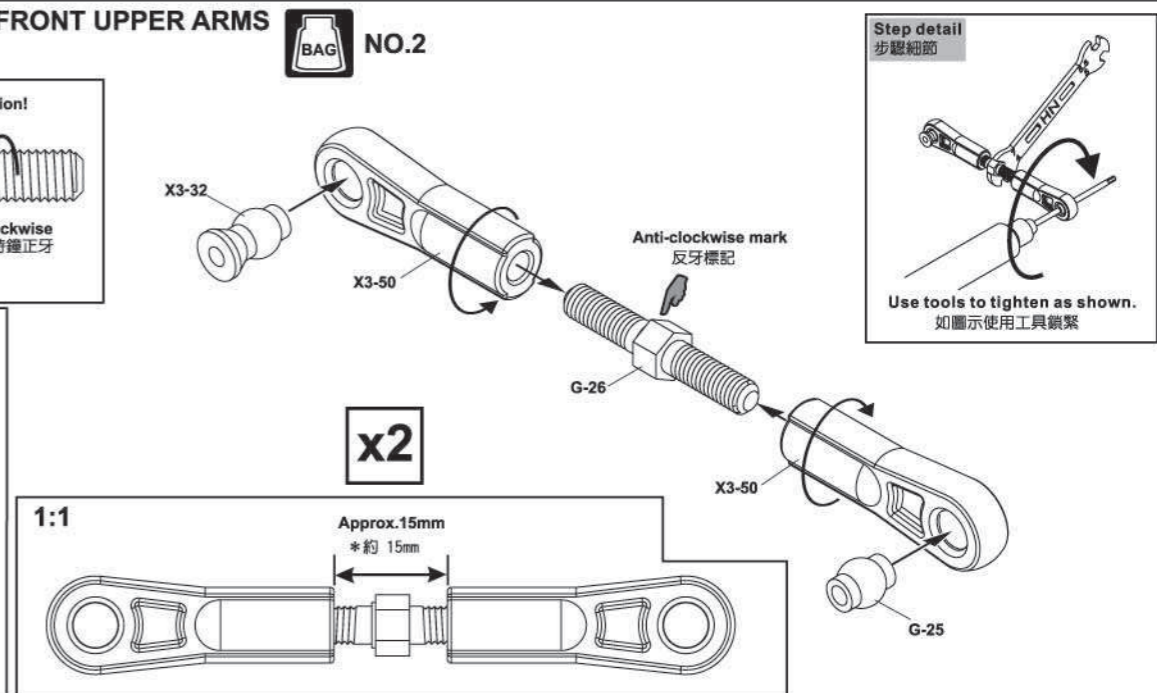
Anti-clockwise  
逆時鐘反牙

Anti-clockwise mark  
反牙標記

Clockwise  
順時鐘正牙

Clockwise mark  
正牙標記

- X3-32 7x12mm Ball  
7x12mm 球型座 .....x2
- G-25 7mm Ball  
球型 .....x2
- G-26 5x35mm Turnbuckle  
正反牙桿 .....x2



Step detail  
步驟細節

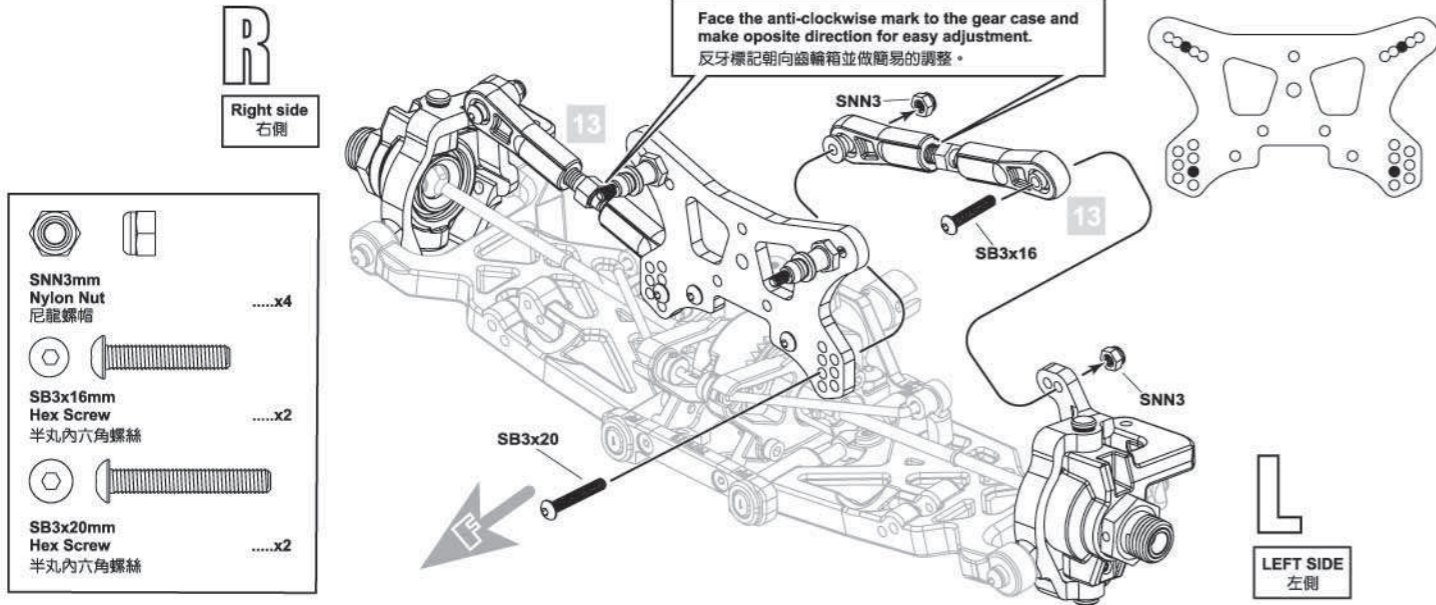


Use tools to tighten as shown.  
如圖示使用工具鎖緊

**14 ASSEMBLY OF THE FRONT UPPER ARMS**  
前上拉桿組合

**BAG NO.2**

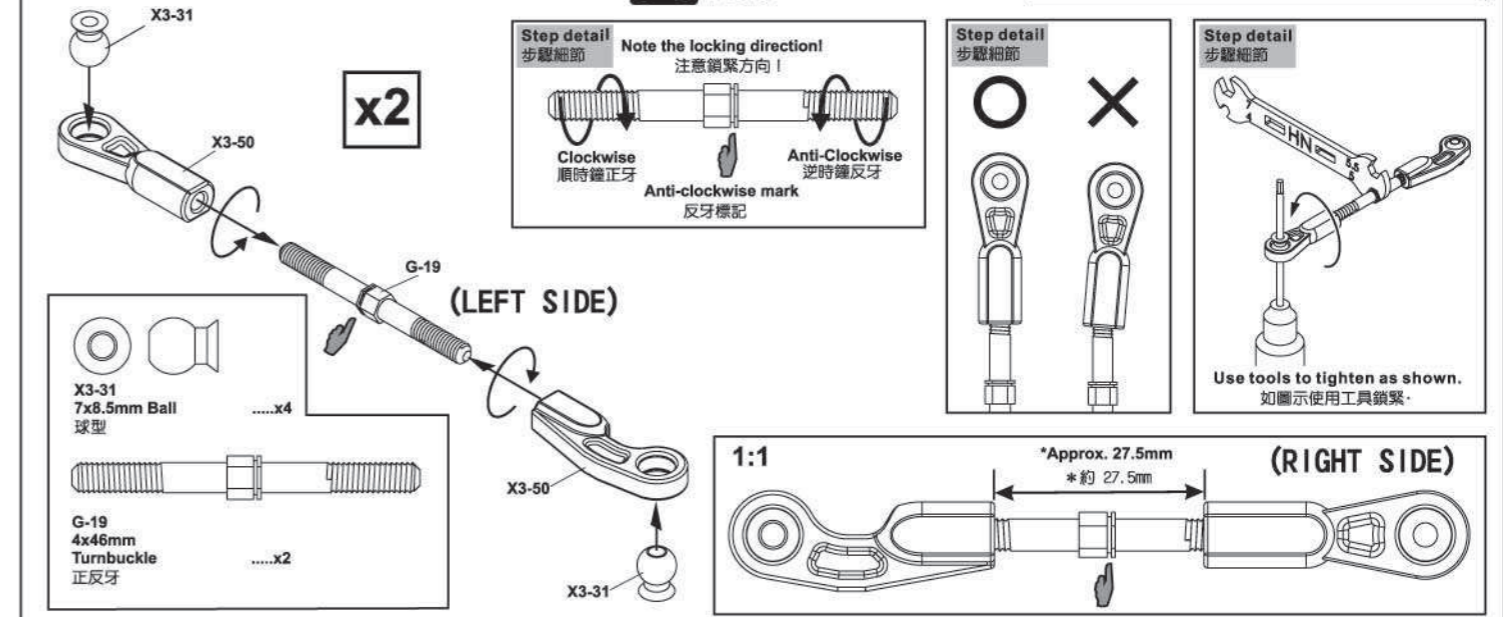
Assemble both right and left sides.  
請組合左/右兩側。



**17 ASSEMBLY OF THE STEERING TIE-ROD**  
轉向拉桿組合

**BAG NO.2 NO.3**

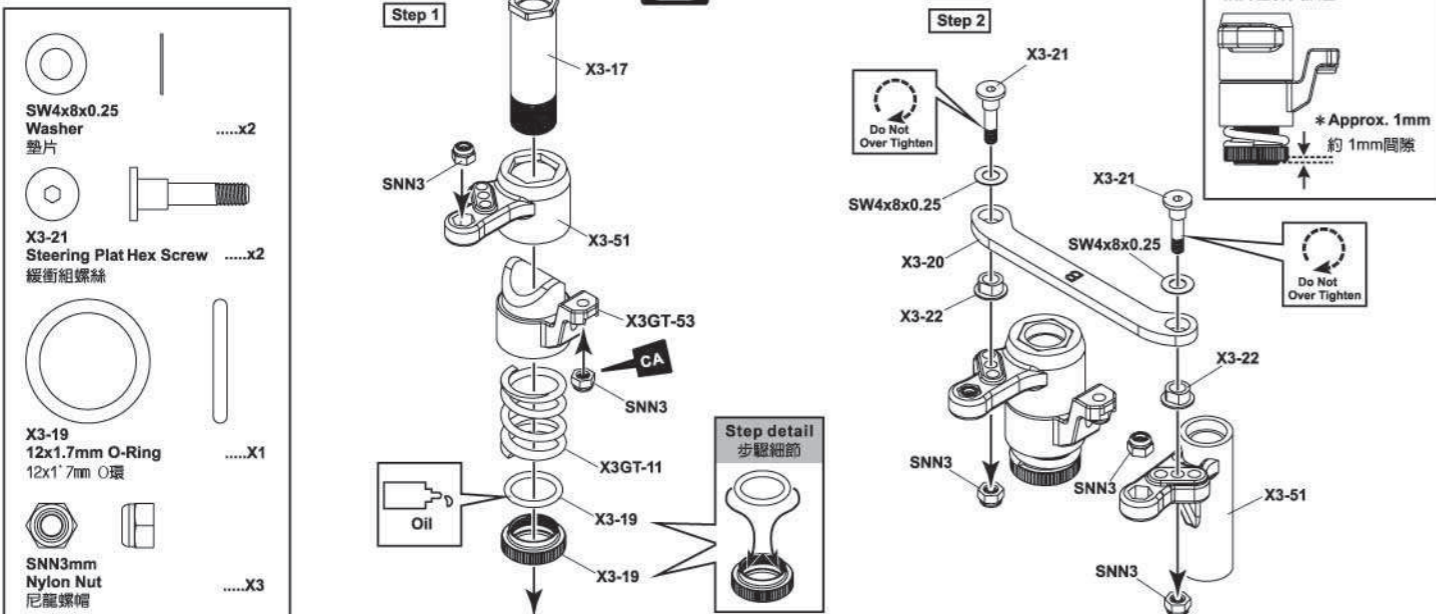
Make two steering rods for left and right hand sides.  
請裝備左邊和右邊2支轉向拉桿。



**15 ASSEMBLY OF THE SERVO SAVER**  
緩衝組組合

**BAG NO.3**

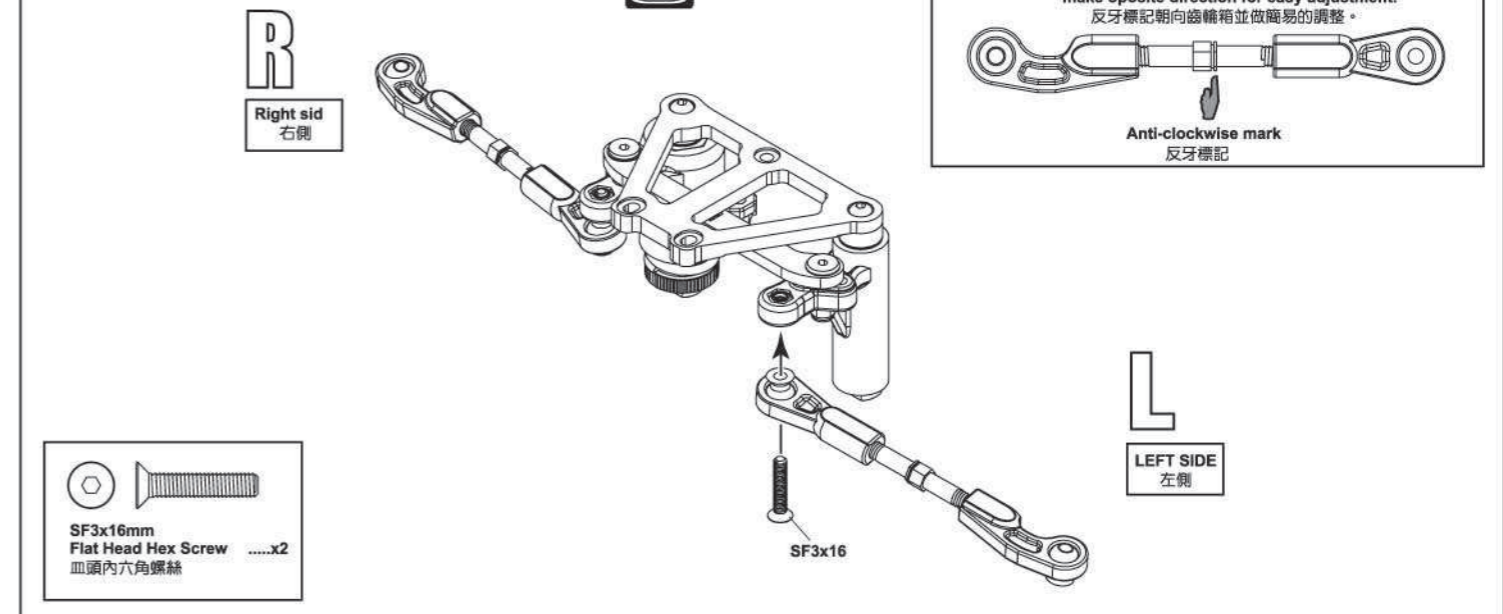
Servo saver spring preload.  
緩衝組彈簧預留



**18 ASSEMBLY OF THE STEERING TIE-ROD**  
轉向拉桿組合

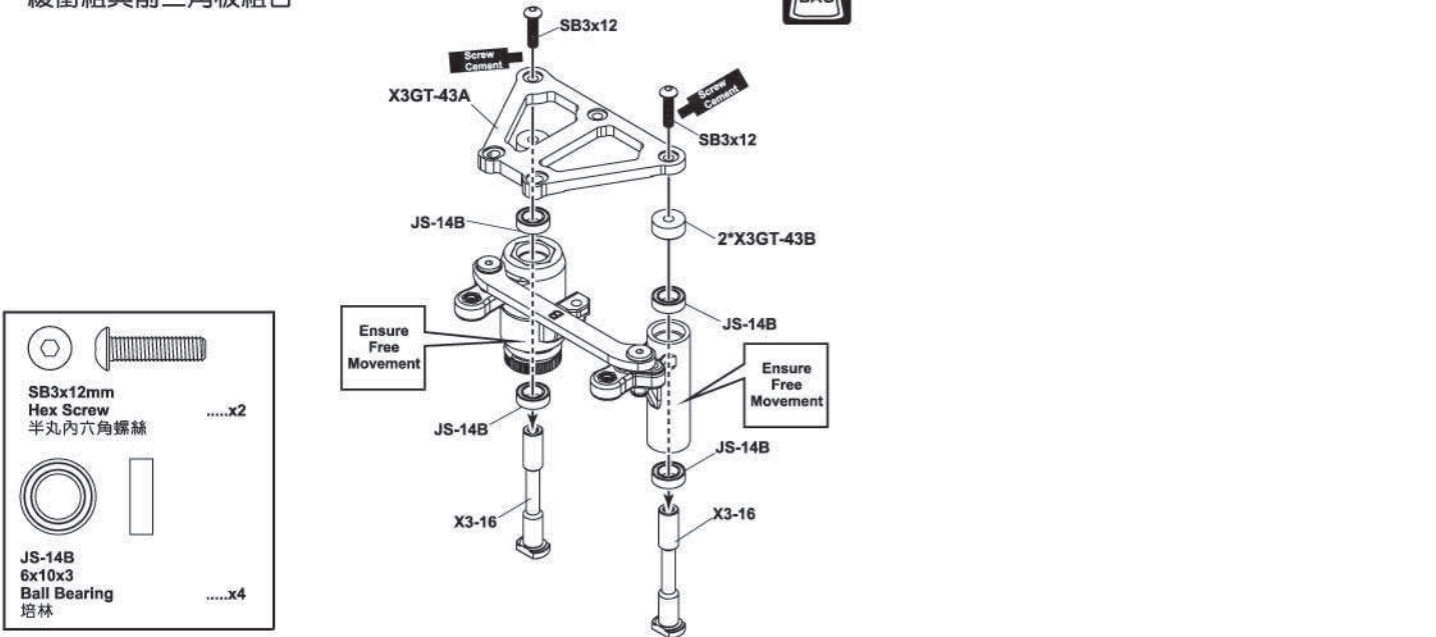
**BAG NO.3**

Face the anti-clockwise mark to the gear case and make opposite direction for easy adjustment.  
反牙標記朝向齒輪箱並做簡易的調整。



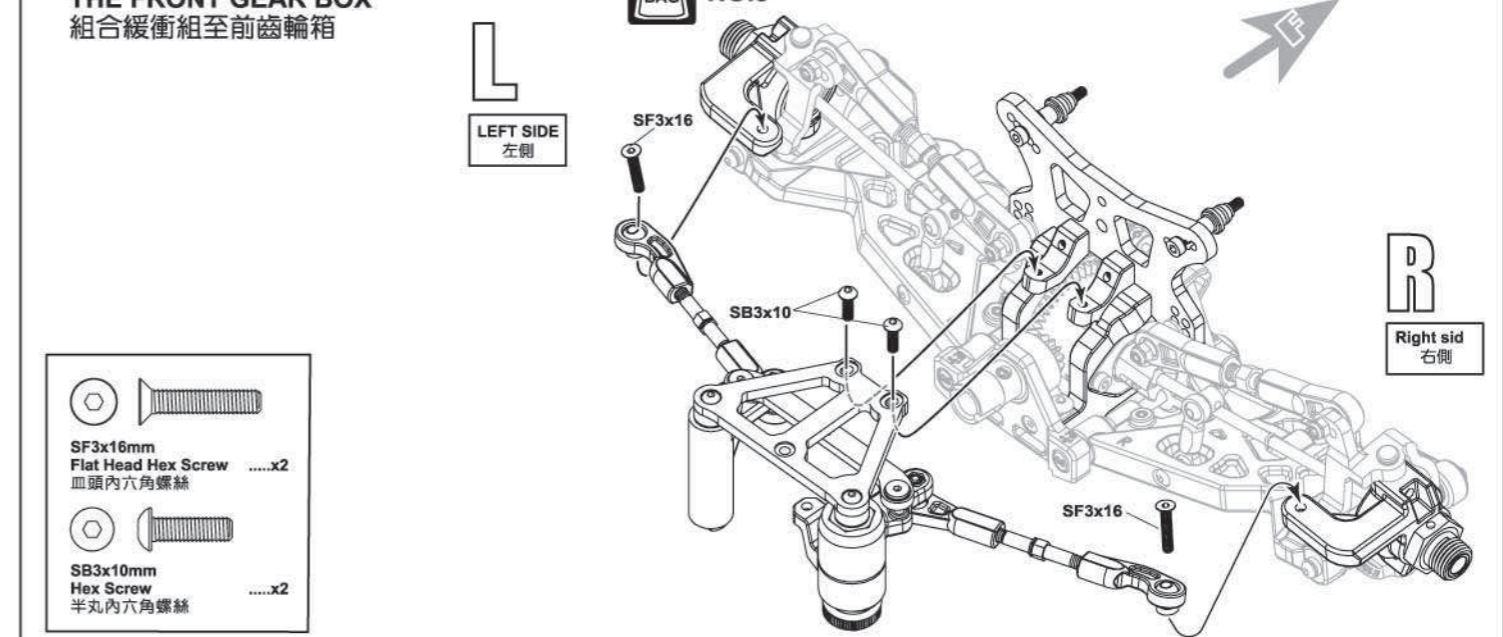
**16 ASSEMBLY OF THE FRONT PLATE ONTO SERVO SAVER**  
緩衝組與前三角板組合

**BAG NO.3**



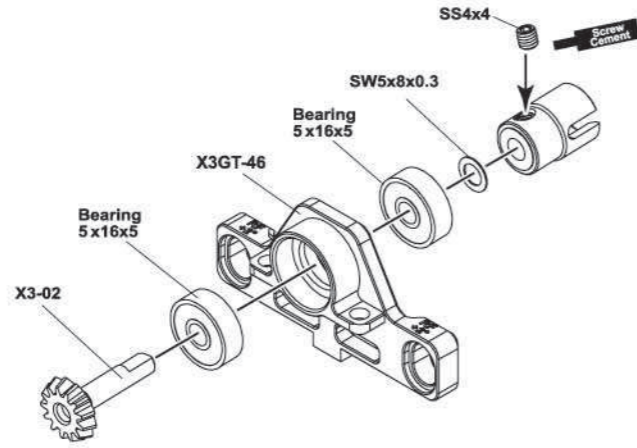
**19 ASSEMBLY OF THE SERVO SAVER ONTO THE FRONT GEAR BOX**  
組合緩衝組至前齒輪箱

**BAG NO.3**



**20 ASSEMBLY OF THE REAR PINION GEAR AND CVD SHAFT**  
後小傘齒與CVD傳動軸組合

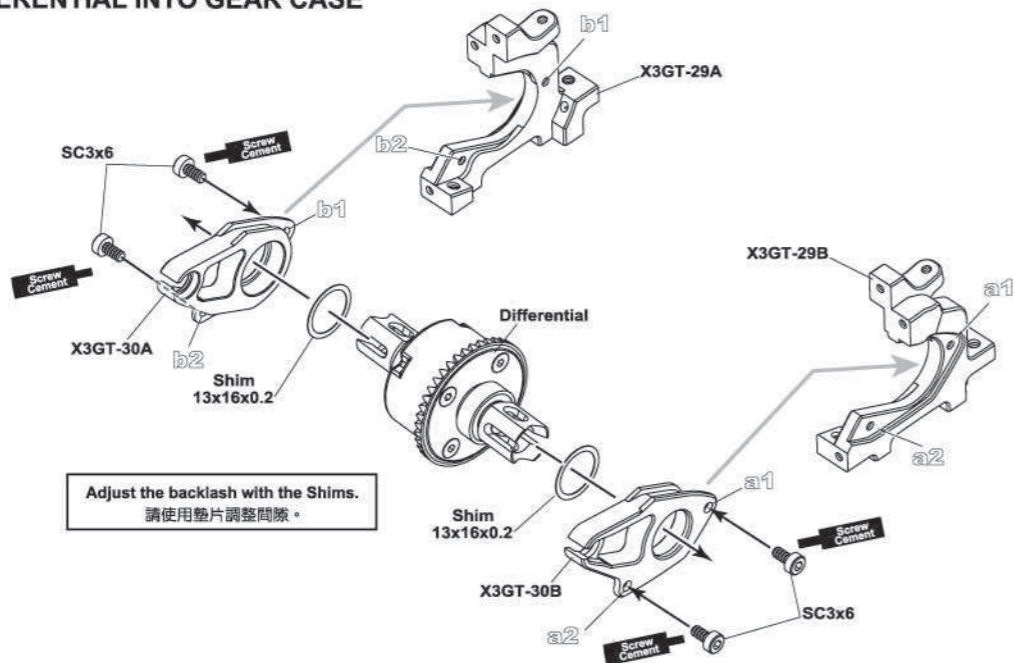
**BAG NO.4**



- SW5x8x0.3mm Washer 墊片 .....x1
- SS4x4mm Set Screw 止付螺絲 .....x1

**21 ASSEMBLY OF THE REAR DIFFERENTIAL INTO GEAR CASE**  
差速器及後齒輪箱組合

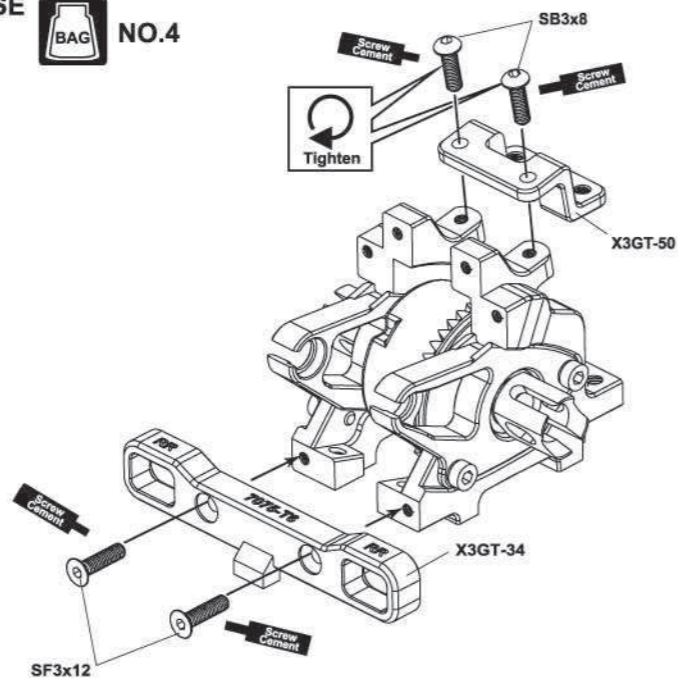
**BAG NO.4**



- SC3x6mm Cap Screw 有頭內六角螺絲 .....x4
- J-20 13x16x0.2mm Shim 薄墊片 .....x2

**22 ASSEMBLY OF THE REAR GEAR CASE**  
後齒輪箱組合

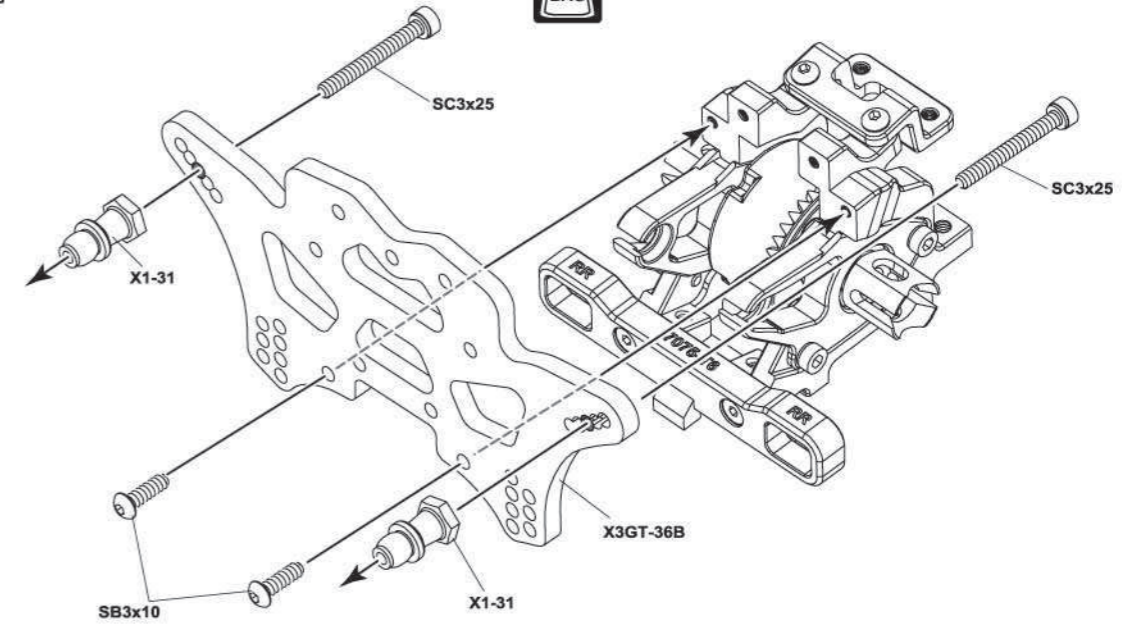
**BAG NO.4**



- SF3x12mm Flat Head Hex Screw 平頭內六角螺絲 .....x2
- SB3x8mm Hex Screw 半孔內六角螺絲 .....x2

**23 ASSEMBLY OF THE REAR SHOCK TOWER ONTO GEAR CASE**  
後差速器與後齒輪箱組合

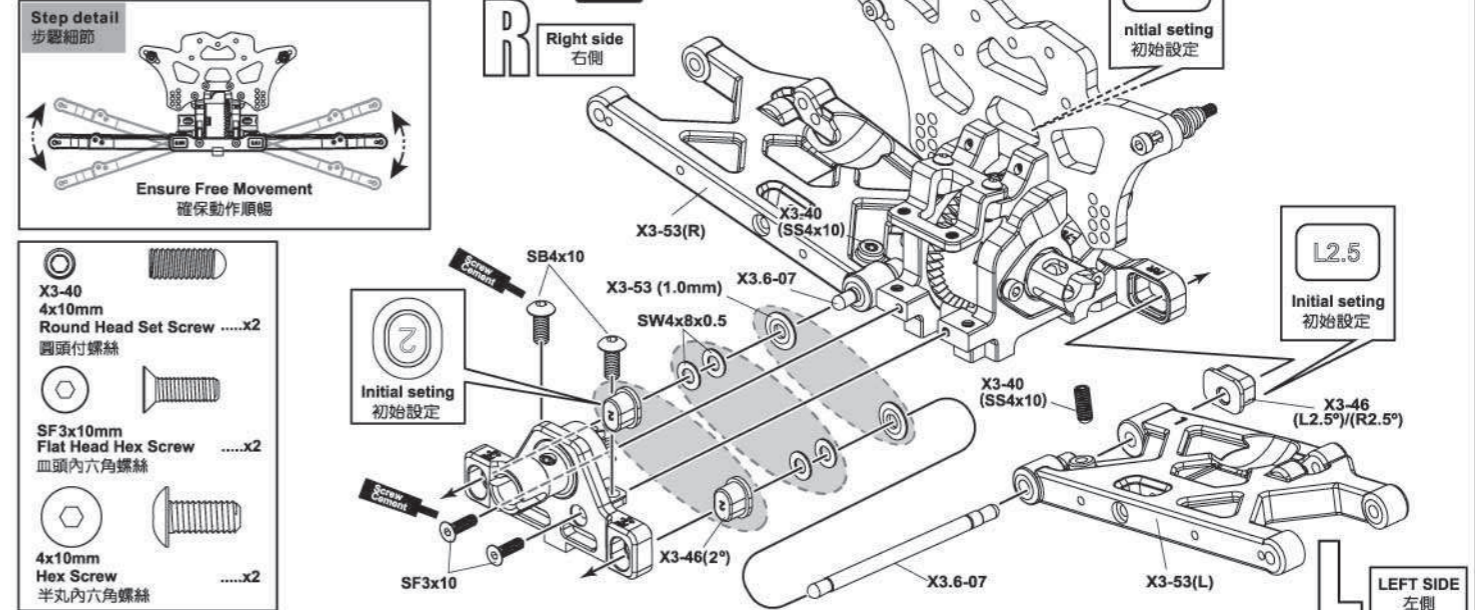
**BAG NO.4**



- SC3x25mm Cap Screw 有頭內六角螺絲 .....x2
- SB3x10mm Hex Screw 半孔內六角螺絲 .....x2

**24 ASSEMBLY OF THE REAR LOWER ARMS**  
後下擺臂組合

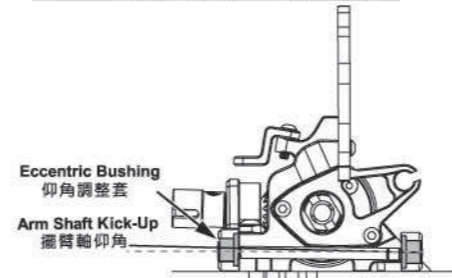
**BAG NO.4**



- X3-40 4x10mm Round Head Set Screw 圓頭付螺絲 .....x2
- SF3x10mm Flat Head Hex Screw 平頭內六角螺絲 .....x2
- 4x10mm Hex Screw 半孔內六角螺絲 .....x2

**25 REAR KICK-UP (RF) & REAR TOE-IN (RR) SETTING**  
後仰角與後內束角調整

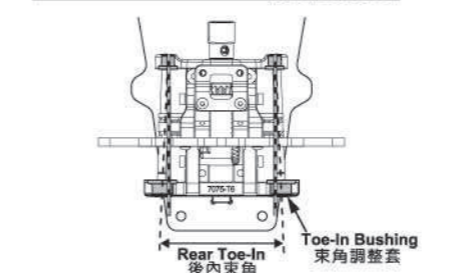
**REAR KICK-UP SETTING 後仰角調整**



Rear Kick-Up後仰角	Characteristics特性
Less Rear Kick-Up 較少的後仰角	<ul style="list-style-type: none"> <li>Absorb road shock less.</li> <li>Applicable flat surface.</li> <li>吸收較少的路面衝擊。</li> <li>適用於較平坦的路面。</li> </ul>
More Rear Kick-Up 較多的後仰角	<ul style="list-style-type: none"> <li>Absorb road shock more.</li> <li>Applicable uneven surface.</li> <li>吸收較多的路面衝擊。</li> <li>適用於較不平的路面。</li> </ul>

RF	Rear Kick-Up後仰角
3.3	2.8°
3	2.5°
2.5	2°
2	1.5°
2 (Reverse) (反置)	1°
0.7 (Reverse) (反置)	0.5°
0 (Reverse) (反置)	0°

**REAR TOE-IN SETTING 後內束角調整**



Rear Toe-In後內束角	Characteristics特性
Less Rear Toe-In 較少的後內束角	<ul style="list-style-type: none"> <li>Reduced Grip.</li> <li>Oversteer tendency.</li> <li>Linear acceleration over the instability.</li> <li>抓地力減少。</li> <li>轉向過度傾向。</li> <li>直線加速較不穩定性。</li> </ul>
More Rear Toe-In 較多的後內束角	<ul style="list-style-type: none"> <li>Increased grip.</li> <li>Understeer tendencies.</li> <li>Linear acceleration than the stability.</li> <li>抓地力增加。</li> <li>轉向不足傾向。</li> <li>直線加速較穩定性。</li> </ul>

RR	Rear Toe-In後內束角
L3.5 R3.5	3.5°
L3.3 R3.3	3.3°
L3 R3	3°
L2.5 R2.5	2.5°
L2 R2	2°



**26 ASSEMBLY OF THE REAR STABILIZER**  
後平衡桿組合

**BAG NO.4**

**Step 1**

**Step 2**

**Step detail**  
Ensure Free Movement  
確保動作順暢

**SB3x18mm Hex Screw** 半丸內六角螺絲 .....x2  
**SS3x3mm Set Screw** 止付螺絲 .....x4

**29 ASSEMBLY OF THE REAR UPPER ARMS**  
後上擺臂組合

**BAG NO.4**

**Step detail**  
Note the locking direction!  
注意鎖緊方向!

**Anti-clockwise mark** 反牙標記

**Use tools to tighten as shown**  
如圖示使用工具鎖緊。

**X3-32** 7x12mm Ball 7x12mm 球型座 .....x2  
**G-25** 7mm Ball 球型 .....x2  
**G-26** 5x35mm Turnbuckle 正反牙桿 .....x2

**x2**

**1:1**

\* Approx.18mm  
約 18 mm 間隙

**27 ASSEMBLY OF THE REAR WHEEL HUBS**  
後輪座組合

**BAG NO.4**

Assemble both right and left side.  
請組合左/右兩側。

**X3-35** 2.5x12.8mm Pin 滾針 .....x2  
**#267E** 2.5x16.8mm Pin 滾針 .....x2  
**4x4mm Set Screw** .....x2  
**SB3x6mm Hex Screw** 半丸內六角螺絲 .....x8

**LIFT SIDE** 左側  
**RIGHT SIDE** 右側

**30 ASSEMBLY OF THE REAR UPPER ARMS**  
後懸吊系統組合

**BAG NO.4**

Face the anti-clockwise mark to the gear case and make opposite direction for easy adjustment.  
反牙標記朝向齒輪箱並做相反的調整。

**SNN3** Nylon Nut 尼龍螺帽 .....x4  
**SB3x18mm Hex Screw** 半丸內六角螺絲 .....x2  
**3x20mm Hex Screw** 半丸內六角螺絲 .....x2

**LEFT SIDE** 左側  
**RIGHT SIDE** 右側

**Detail**  
Shock Stay  
**Detail**  
Rear Hub

Assemble both right and left sides.  
請組合左/右兩側。

**28 ASSEMBLY OF THE REAR SUSPENSION ARMS**  
後懸吊系統組合

**BAG NO.4**

Assemble both right and left sides.  
請組合左/右兩側。

**Step detail**  
Ensure Free Movement  
確保動作順暢

**LEFT SIDE** 左側  
**RIGHT SIDE** 右側

**SB3x5mm Hex Screw** 半丸內六角螺絲 .....x4

**31 ASSEMBLY OF THE REAR BODY POST**  
後車殼柱組合

**BAG NO.9**

**Step 1**

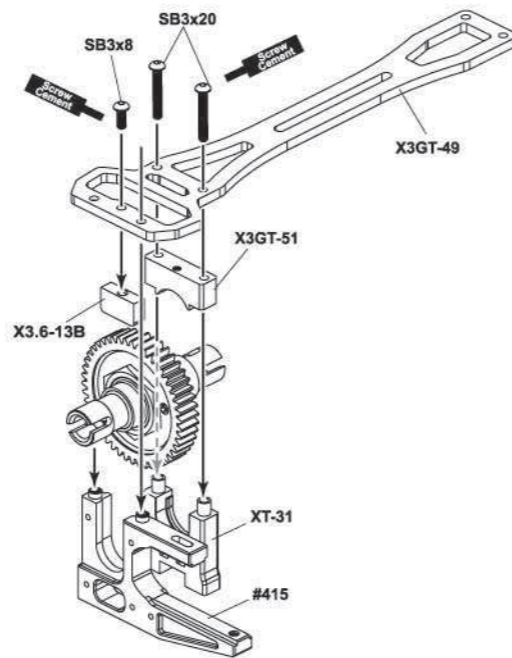
**Step detail**  
Ensure Free Movement  
確保動作順暢

**SNN3mm Nylon Nut** 尼龍螺帽 .....x3  
**SC2.5x16mm Cap Screw** 有頭內六角螺絲 .....x2  
**SB3x10mm Hex Screw** 半丸內六角螺絲 .....x3

**Step 2**

**32 ASSEMBLY OF THE SPUR GEAR MOUNT**  
主齒輪座組合

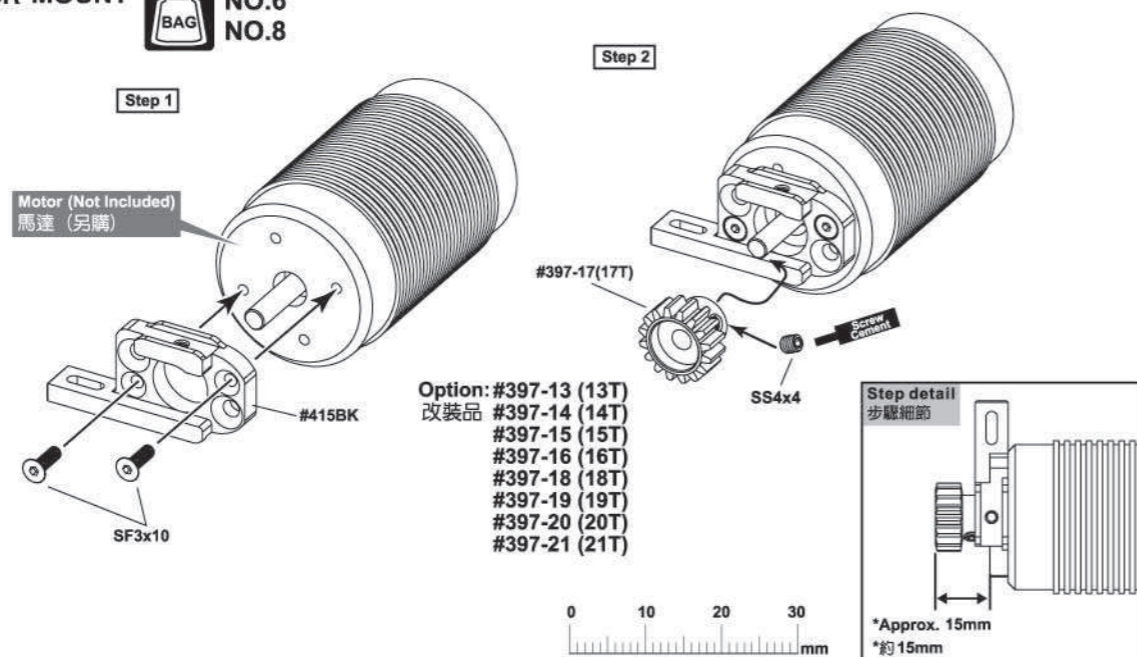
**BAG NO.6**



- SB3x8mm Hex Screw .....x1  
半孔內六角螺絲
- 3x20mm Hex Screw .....x2  
半孔內六角螺絲

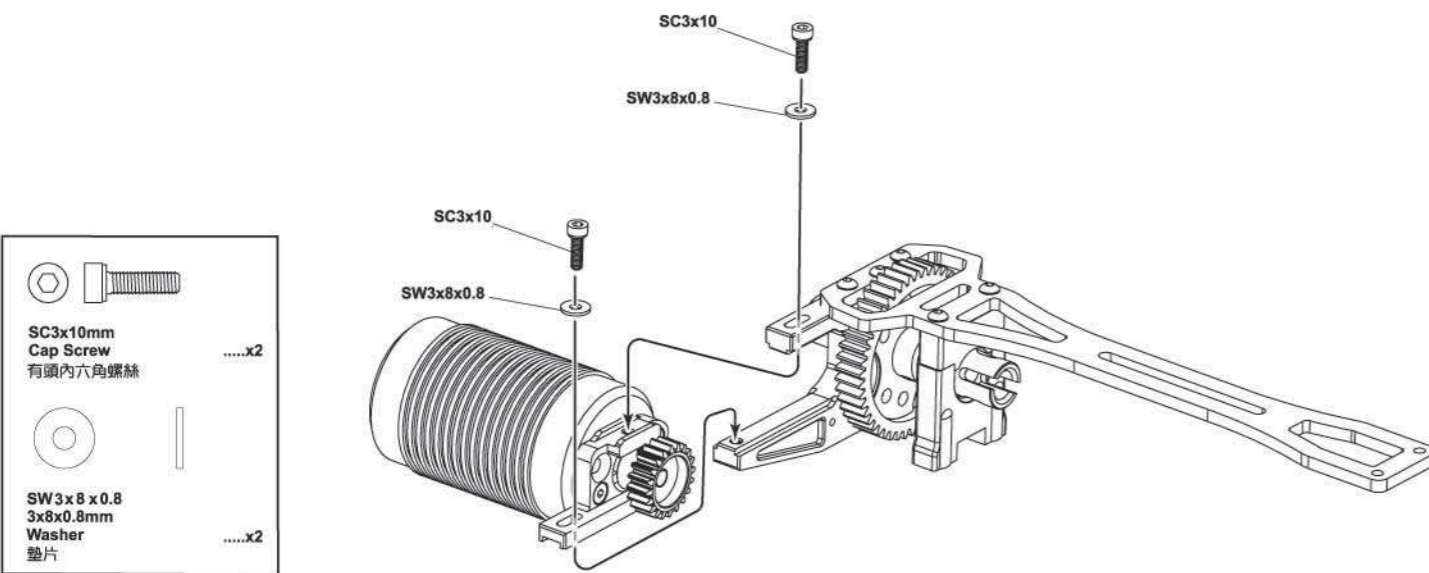
**33 ASSEMBLY OF MOTOR MOUNT**  
馬達座組合

**BAG NO.6 NO.8**



- SF3x10mm Flat Head Hex Screw .....x2  
皿頭內六角螺絲
- SS4x4mm Set Screw .....x1  
止付螺絲

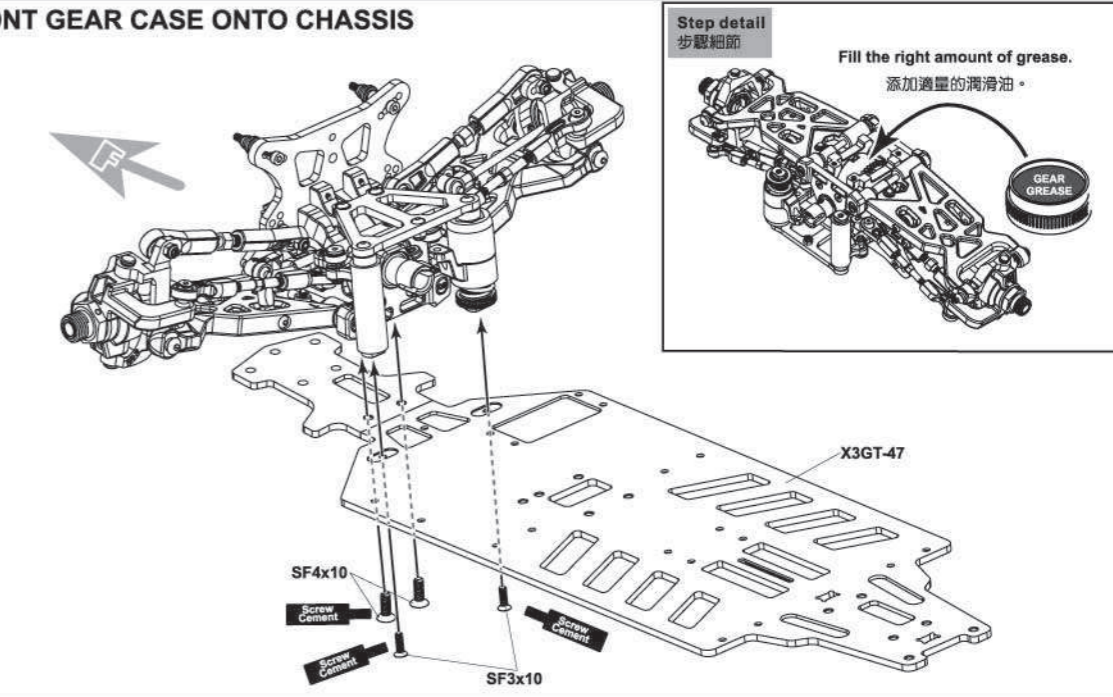
**34 ASSEMBLY OF THE MOTOR MOUNT & THE SPUR GEAR**  
馬達座與主齒輪座組合



- SC3x10mm Cap Screw .....x2  
有頭內六角螺絲
- SW3x8x0.8mm Washer .....x2  
墊片

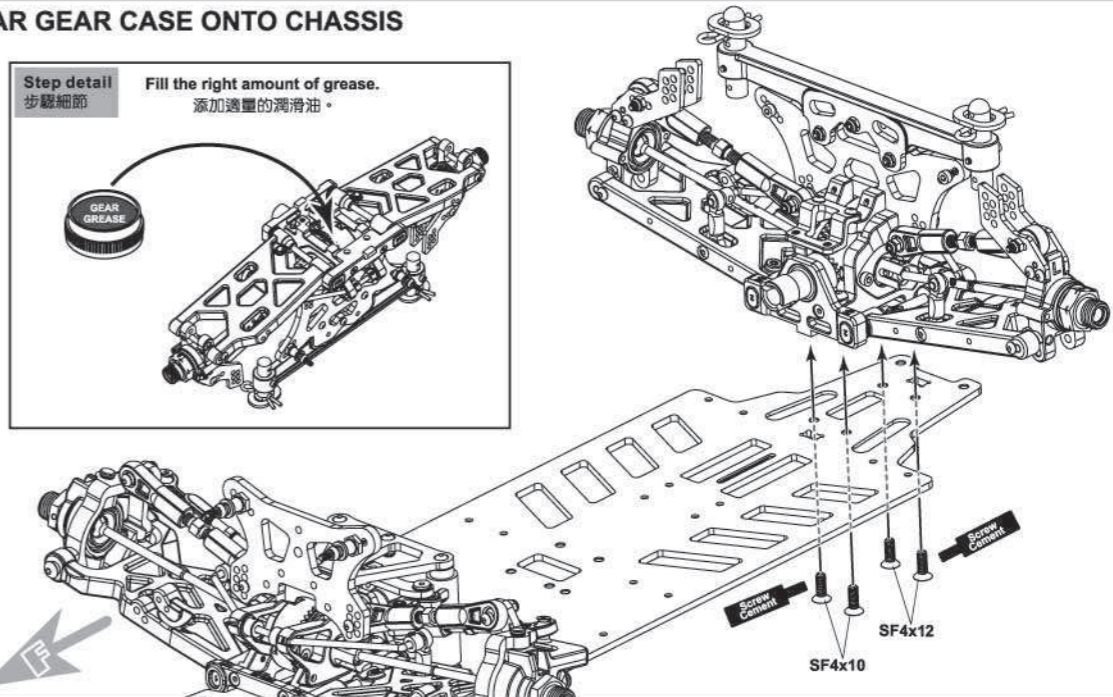
**35 ASSEMBLY OF THE FRONT GEAR CASE ONTO CHASSIS**  
組合前齒輪箱至底盤

- SF3x10mm Flat Head Hex Screw .....x2  
皿頭內六角螺絲
- SF4x10mm Flat Head Hex Screw .....x2  
皿頭內六角螺絲



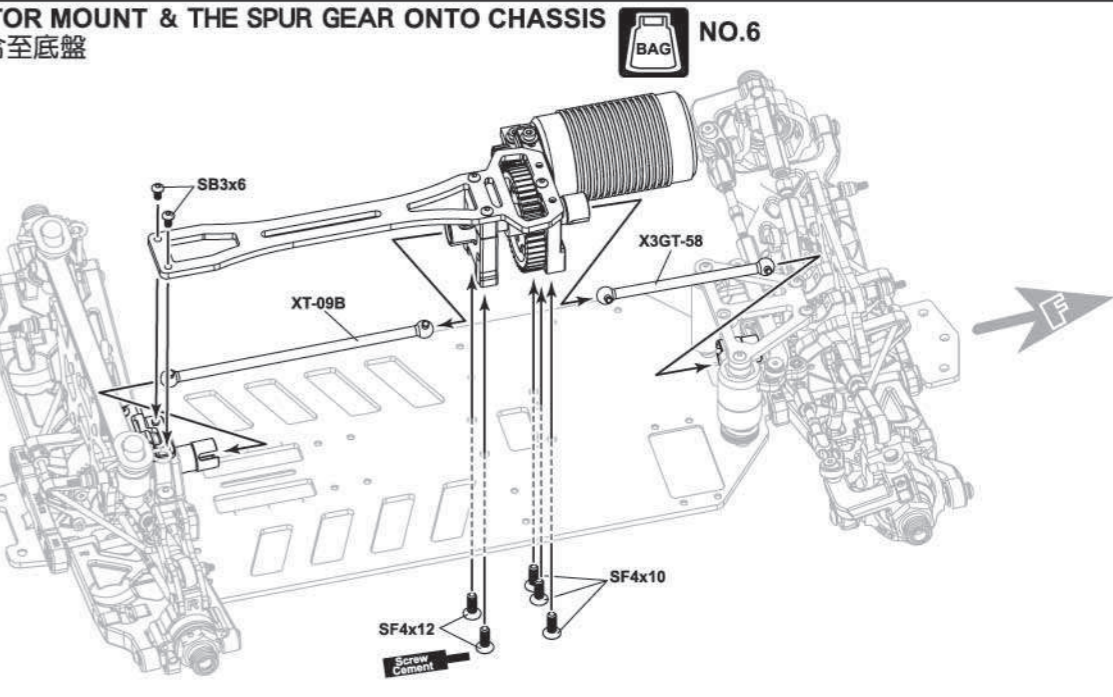
**36 ASSEMBLY OF THE REAR GEAR CASE ONTO CHASSIS**  
組合後齒輪箱至底盤

- SF4x10mm Flat Head Hex Screw .....x2  
皿頭內六角螺絲
- SF4x12mm Flat Head Hex Screw .....x2  
皿頭內六角螺絲



**37 ASSEMBLY OF THE MOTOR MOUNT & THE SPUR GEAR ONTO CHASSIS**  
組合馬達座與主齒輪座組合至底盤

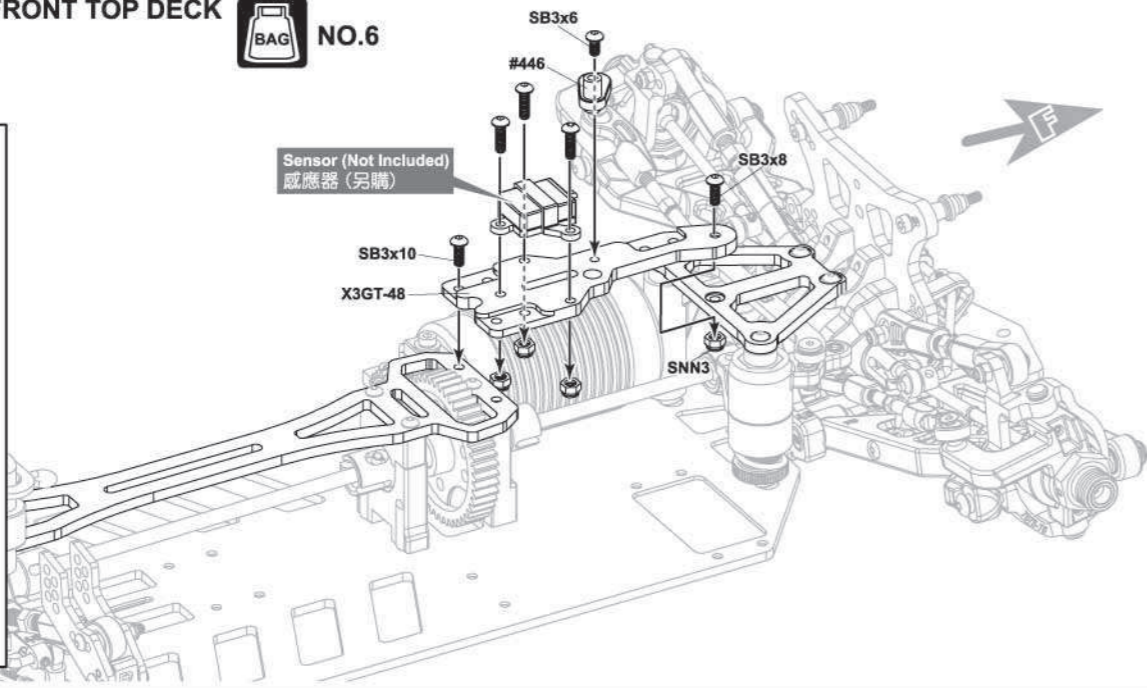
- SB3x6mm Hex Screw .....x2  
半孔內六角螺絲
- SF4x10mm Flat Head Hex Screw .....x3  
皿頭內六角螺絲
- SF4x12mm Flat Head Hex Screw .....x2  
皿頭內六角螺絲



**38 ASSEMBLY OF THE FRONT TOP DECK**  
前補強板組合

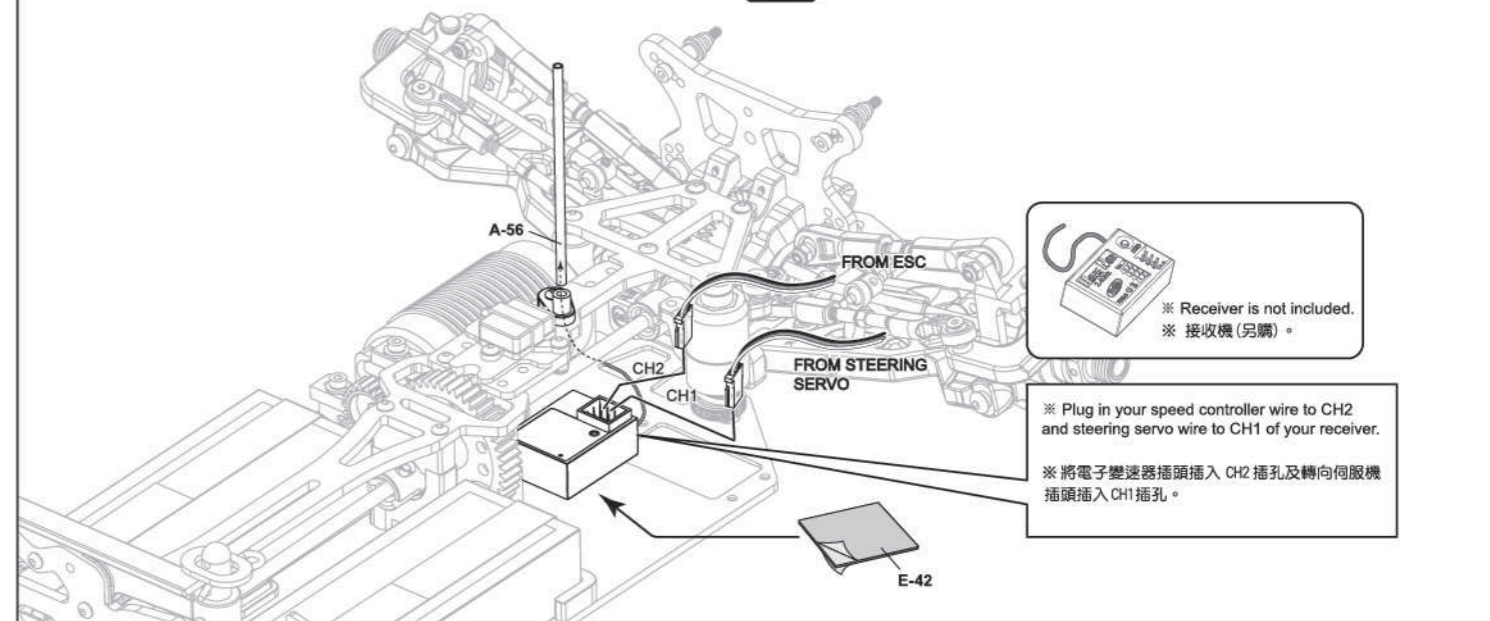
**BAG NO.6**

-  SB3x6mm Hex Screw 半丸內六角螺絲 .....x1
-  SB3x8mm Hex Screw 半丸內六角螺絲 .....x1
-  SB3x10mm Hex Screw 半丸內六角螺絲 .....x1
-  SNN3mm Nylon Nut 尼龍螺帽 .....x1



**41 ASSEMBLY OF THE RECEIVER ONTO THE CHASSIS**  
組合魔接收機至底盤

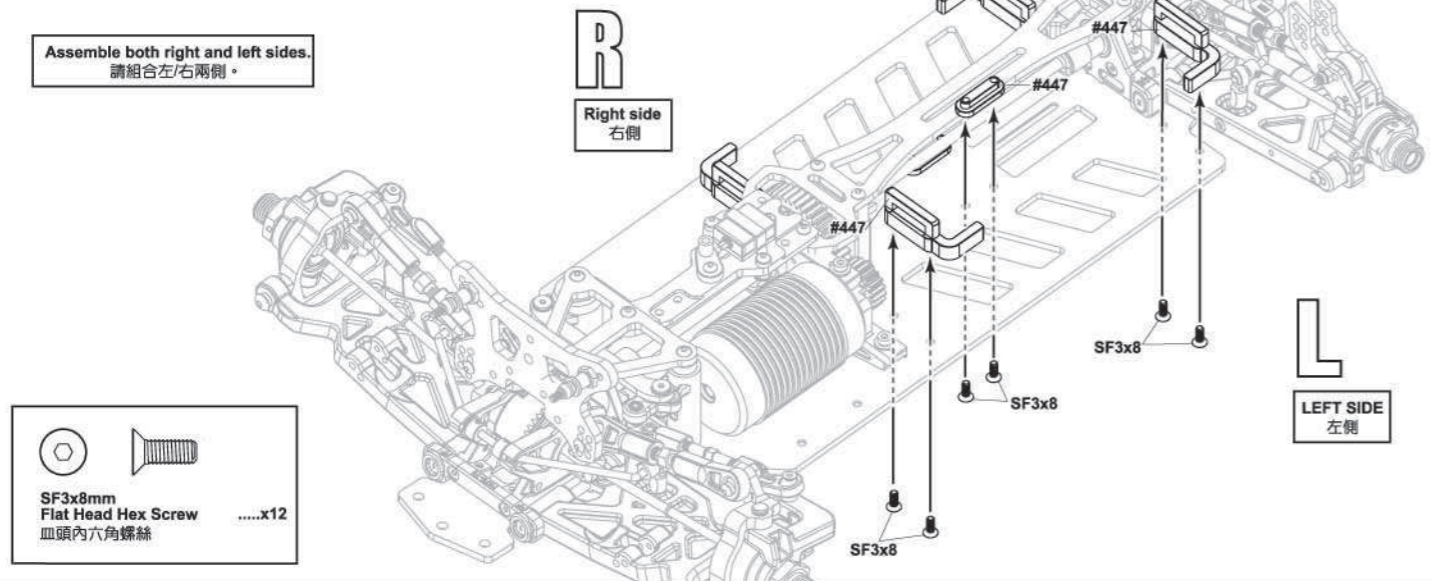
**BAG NO.8**



**39 ASSEMBLY OF THE BATTERY MOUNT ONTO CHASSIS**  
組合電池固定座至底盤

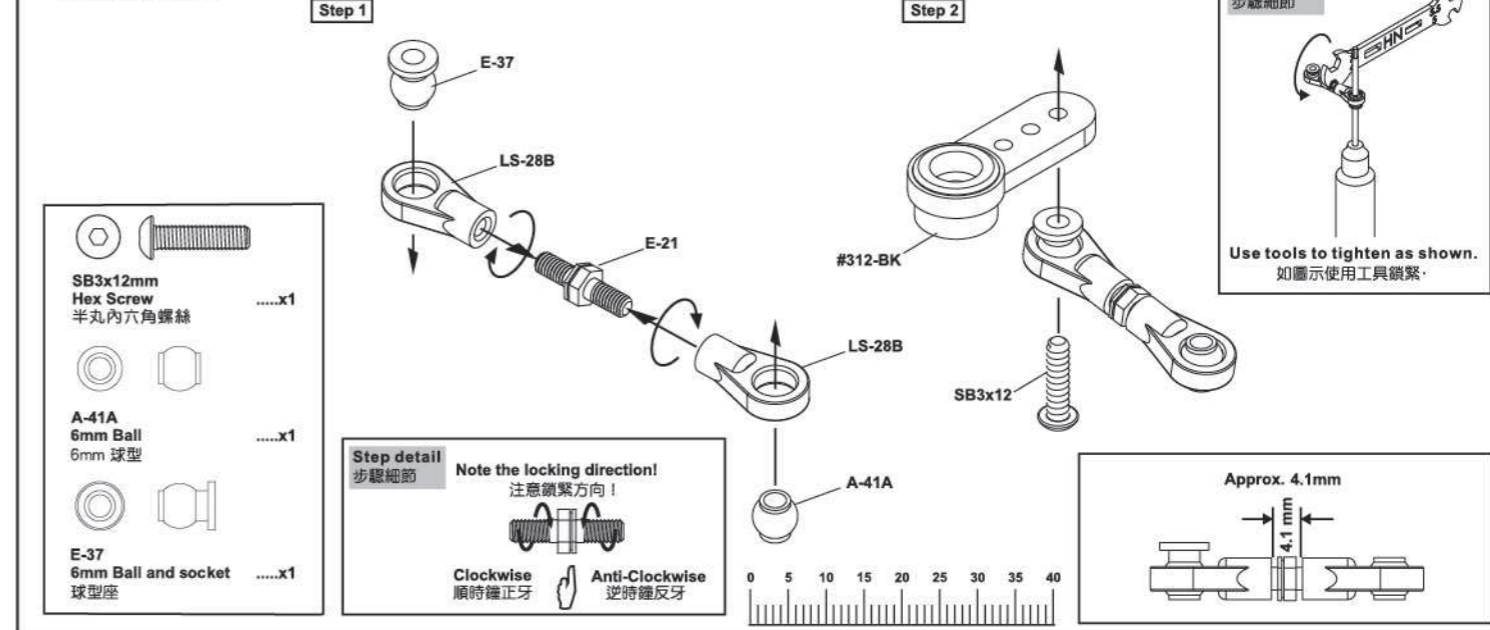
**BAG NO.7**




Assemble both right and left sides.  
請組合左右兩側。



-  SF3x8mm Flat Head Hex Screw 平頭內六角螺絲 .....x12

**42 ASSEMBLY OF THE STEERING ROD ON STEERING SERVO**  
轉向拉桿組合

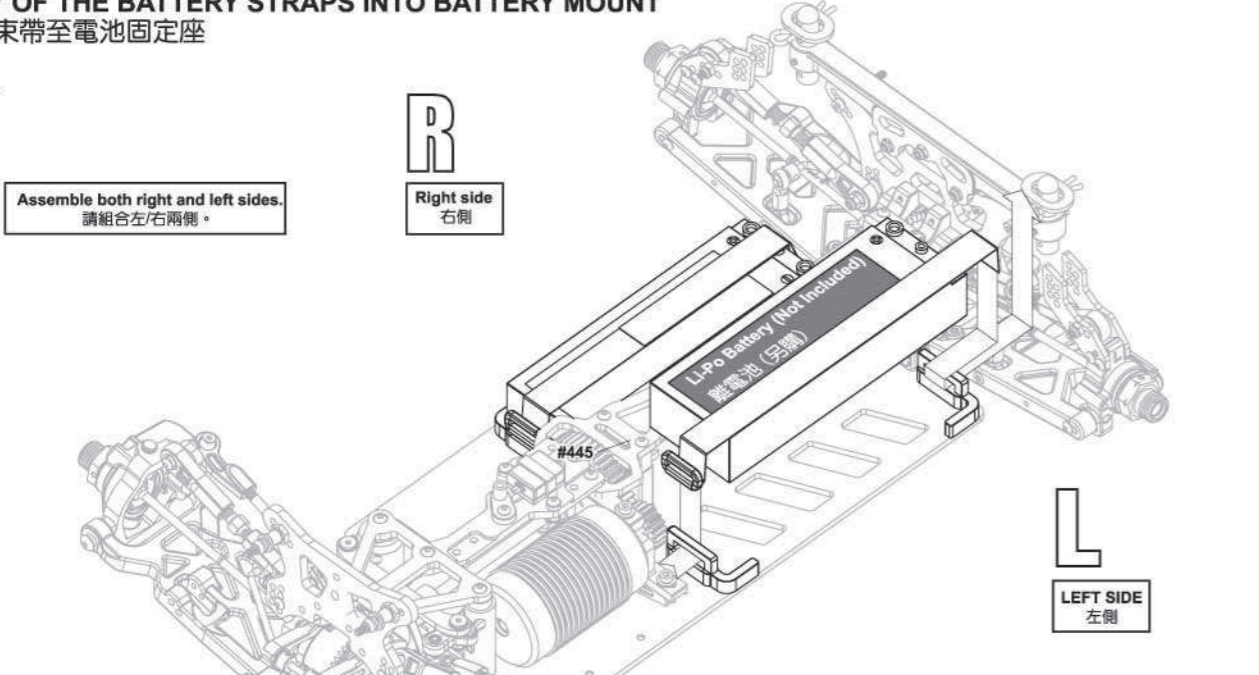


-  SB3x12mm Hex Screw 半丸內六角螺絲 .....x1
-  A-41A 6mm Ball 6mm 球型 .....x1
-  E-37 6mm Ball and socket 球型座 .....x1

**40 ASSEMBLY OF THE BATTERY STRAPS INTO BATTERY MOUNT**  
組合魔鬼粘束帶至電池固定座

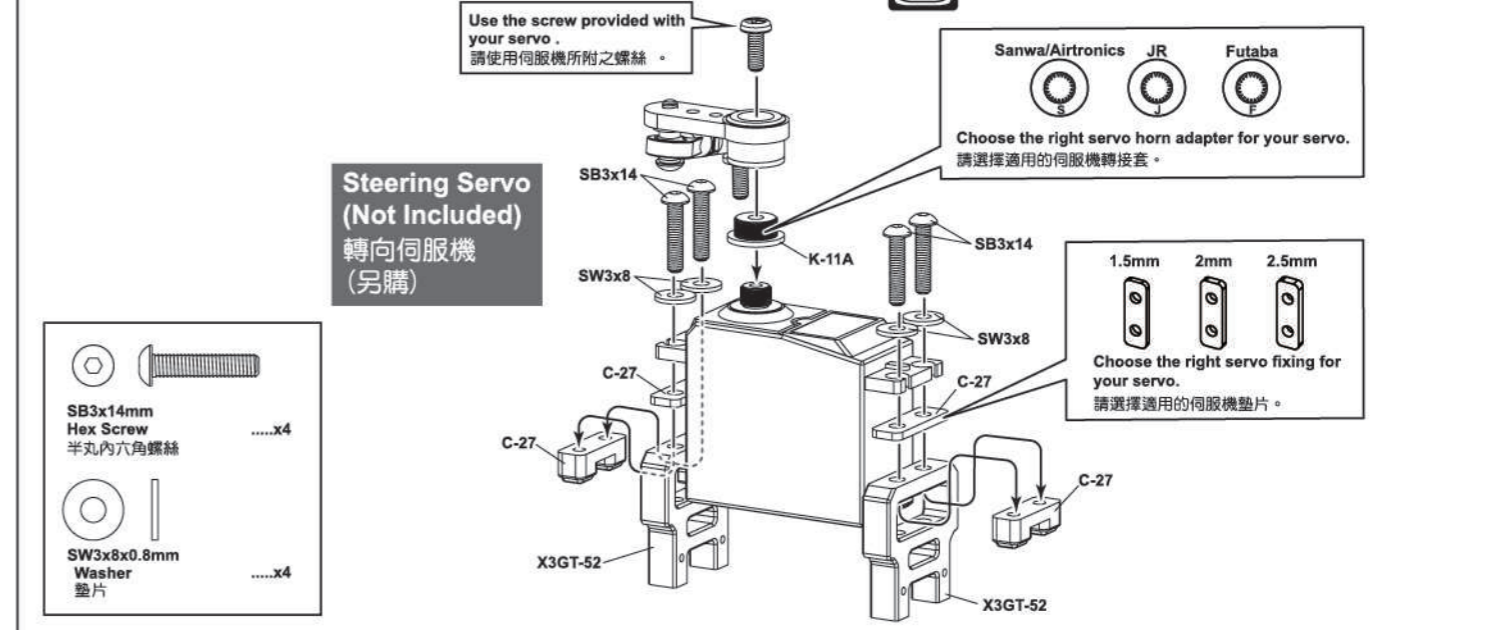
**BAG NO.7**



Assemble both right and left sides.  
請組合左右兩側。



**43 ASSEMBLY OF THE STEERING SERVO ONTO SERVO HOLDER**  
組合轉向伺服機至伺服機座

**BAG NO.7**

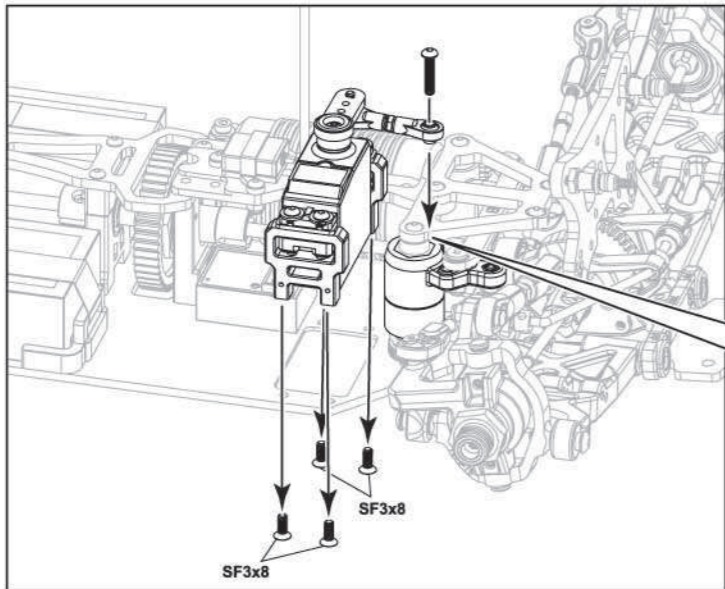


-  SB3x14mm Hex Screw 半丸內六角螺絲 .....x4
-  SW3x8x0.8mm Washer 墊片 .....x4

**44 ASSEMBLY OF THE SERVO BASE ONTO CHASSIS**  
組合伺服機座至底盤

**BAG NO.8**

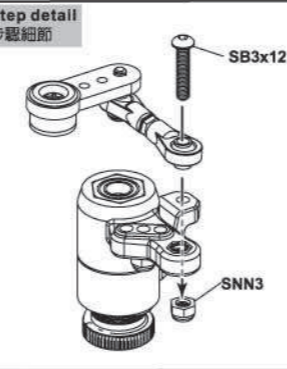
-  SNN3mm Nylon Nut 尼龍螺帽 .....x1
-  SF3x8mm Flat Head Hex Screw 皿頭內六角螺絲 .....x4
-  SB3x12mm Hex Screw 半丸內六角螺絲 .....x1



Step detail 步驟細節



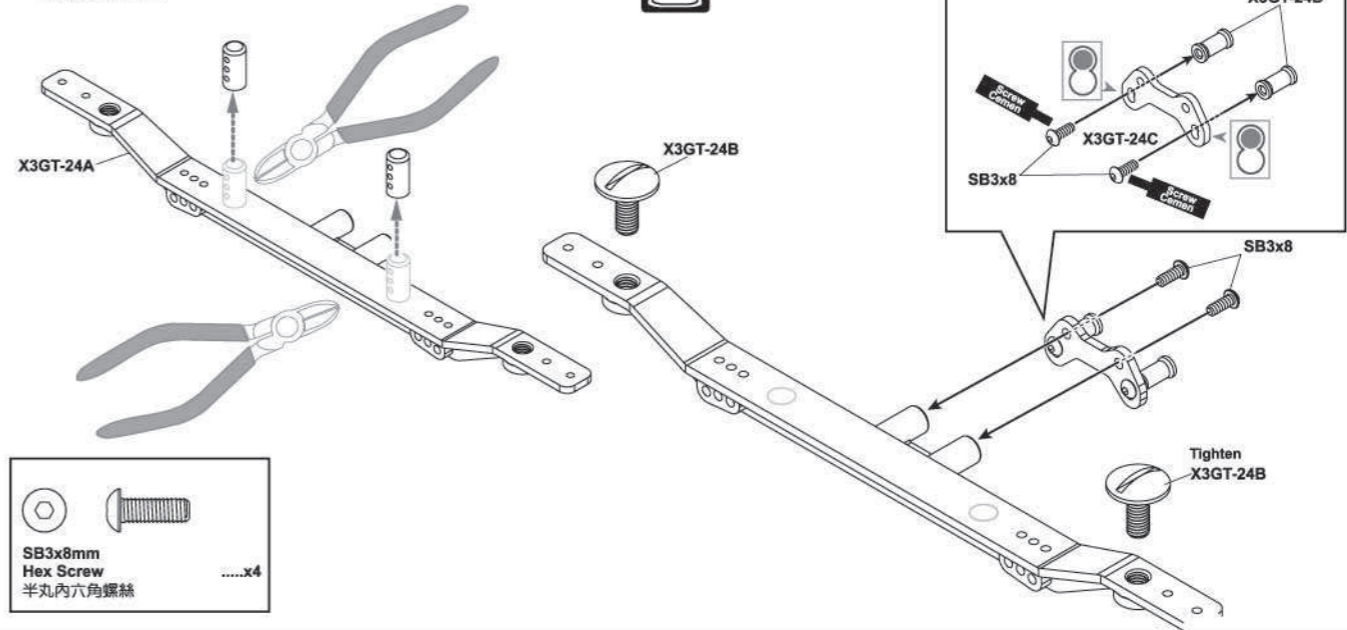
Step detail 步驟細節



**47 ASSEMBLY OF THE REAR BODY FASTEN SET**  
車殼架組合

**BAG NO.11**

-  SB3x8mm Hex Screw 半丸內六角螺絲 .....x4

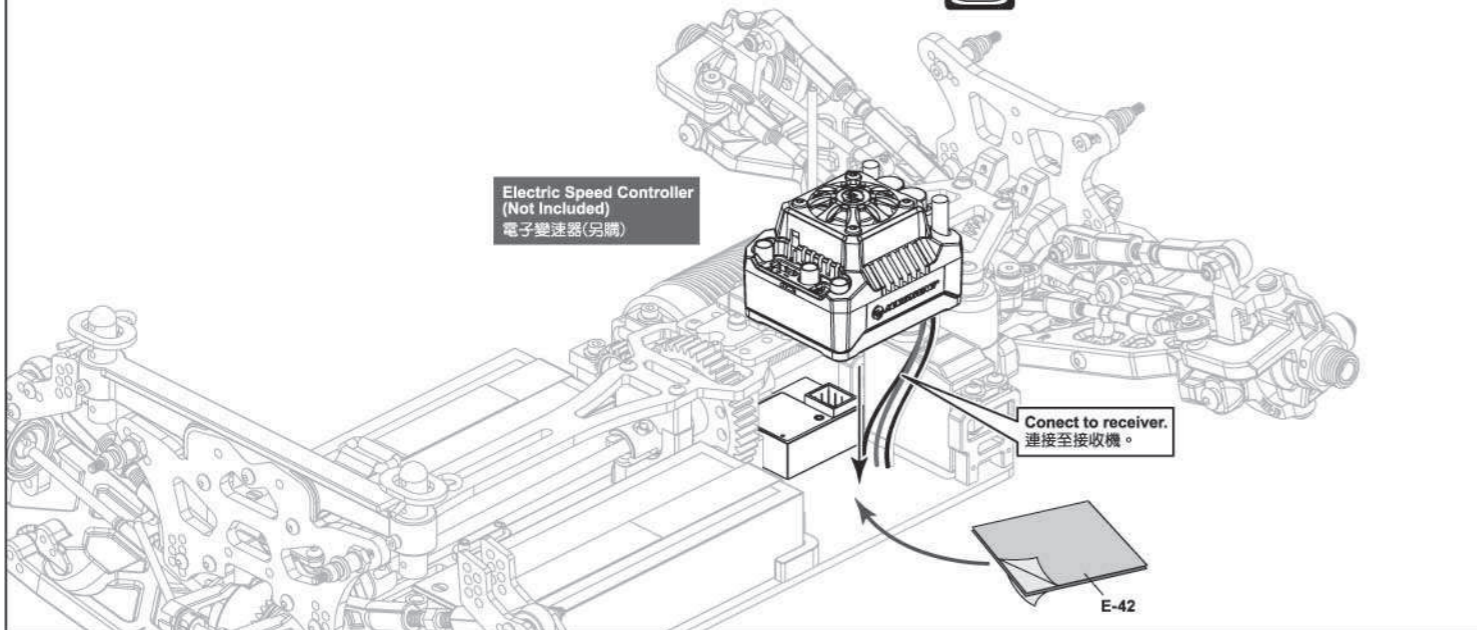


**45 ASSEMBLY OF THE ELECTRIC SPEED CONTROLLER ONTO CHASSIS**  
組合電子變速器至底盤

**BAG NO.8**

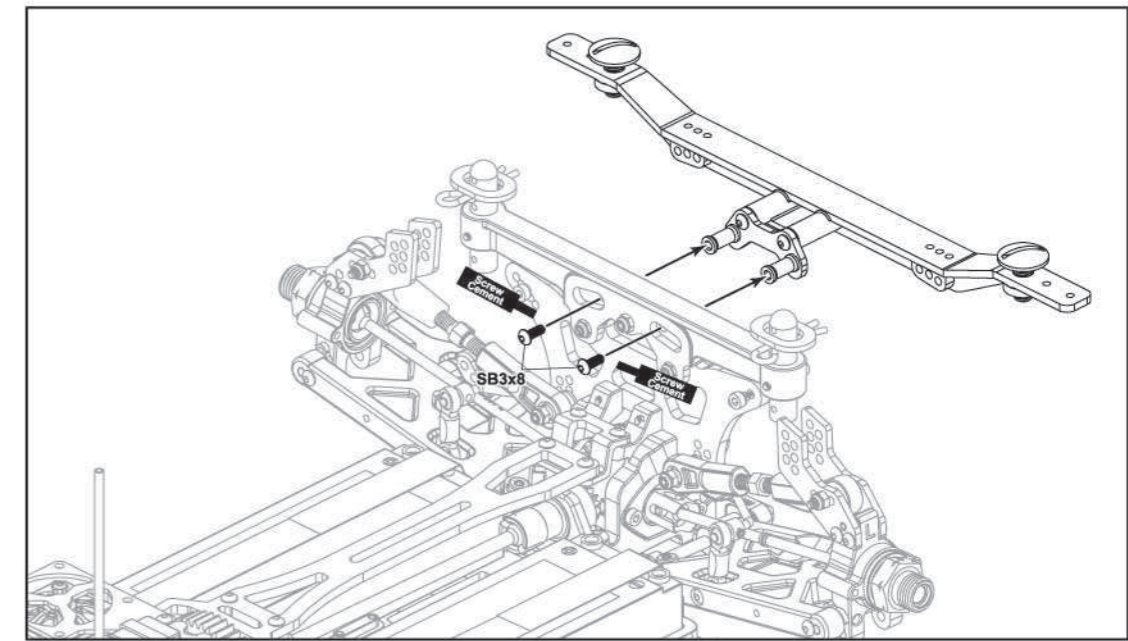
Electric Speed Controller (Not Included)  
電子變速器(另購)

Connect to receiver.  
連接至接收機。



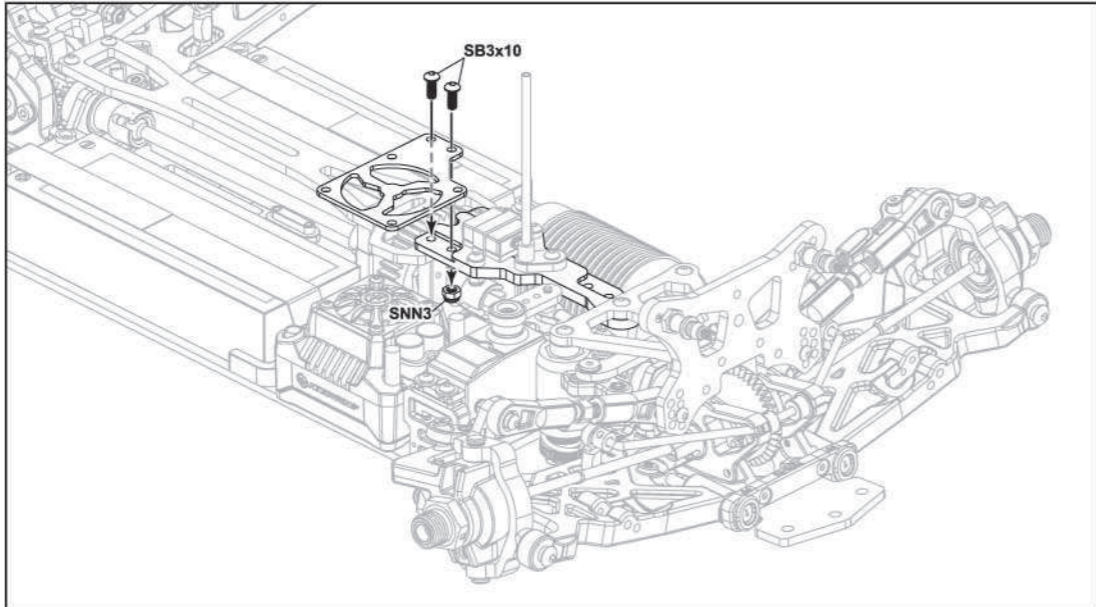
**48 ASSEMBLY OF THE REAR BODY BRACE AND SHOCK TOWER**  
車殼架與油壓架組合

-  SB3x8mm Hex Screw 半丸內六角螺絲 .....x2



**46 ASSEMBLY OF THE FAN MOUNTING PLATE ONTO FRONT TOP DECK**  
組合風扇座至前補強板

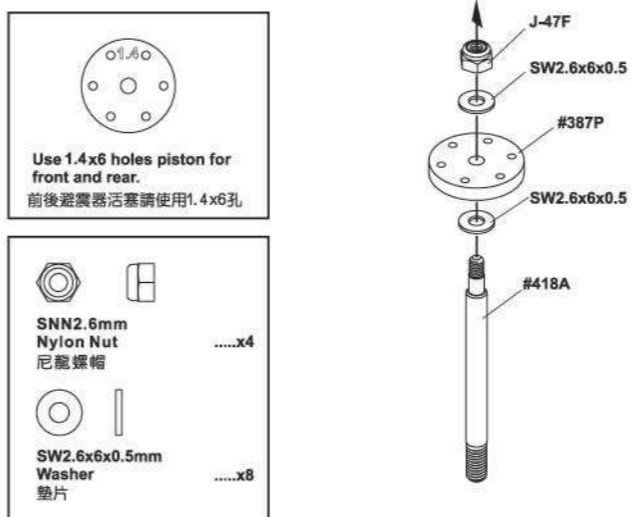
-  SB3x10mm Hex Screw 半丸內六角螺絲 .....x2
-  SNN3mm Nylon Nut 尼龍螺帽 .....x1



**49 ASSEMBLY OF THE SHOCK SHAFTS**  
組合避震器

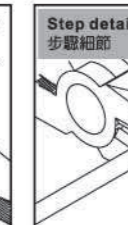
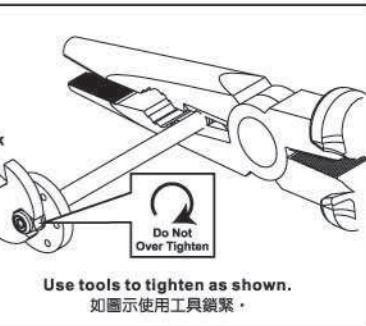
**BAG NO.10 x4**

-  SNN2.6mm Nylon Nut 尼龍螺帽 .....x4
-  SW2.6x6x0.5mm Washer 墊片 .....x8



Step detail 步驟細節

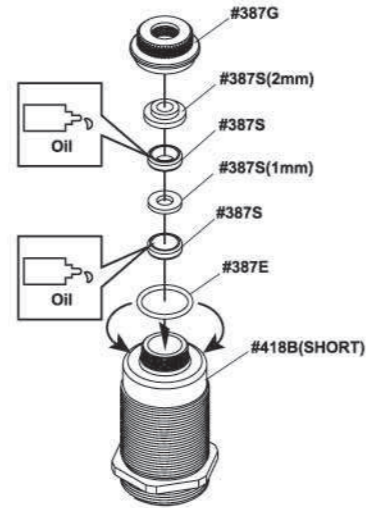
- Hold the shock rod at its thread with side needle nosed pliers. 使用尖嘴鉗夾住避震軸心螺紋頂部。
- Be careful not to damage the shock shaft. 小心不要夾傷避震軸心。



**50 ASSEMBLY OF THE SHOCK O-RING**  
組合避震器

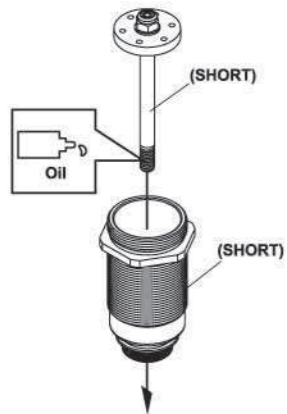
BAG NO.10

x4

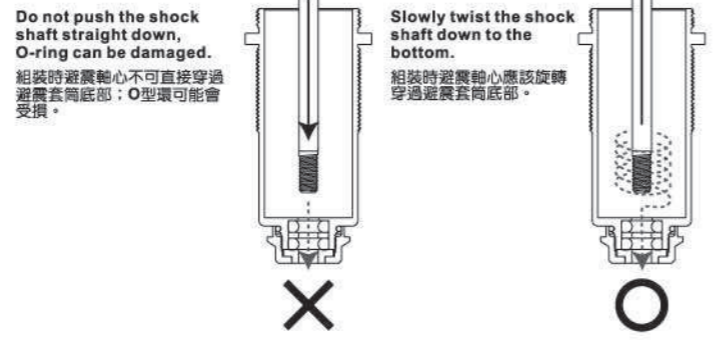


**51 ASSEMBLY OF THE SHOCK SHAFTS INTO SHOCK BODIES**  
組合避震器

x4



**EXTREMELY IMPORTANT 非常重要**



Do not push the shock shaft straight down, O-ring can be damaged.  
組裝時避震軸心不可直接穿過避震套筒底部；O型環可能會受損。

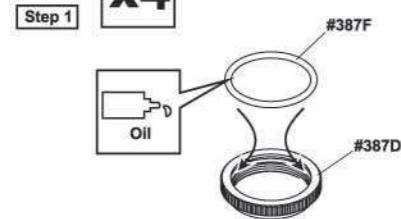
Slowly twist the shock shaft down to the bottom.  
組裝時避震軸心應該旋轉穿過避震套筒底部。

**52 ASSEMBLY OF THE SHOCK ADJUST RING**  
組合避震器

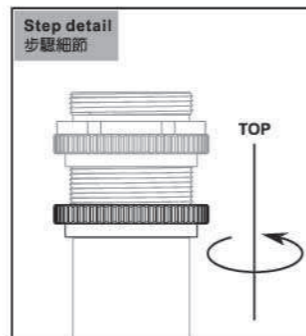
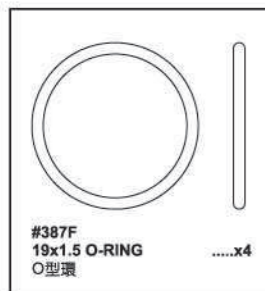
BAG NO.10

x4

x4

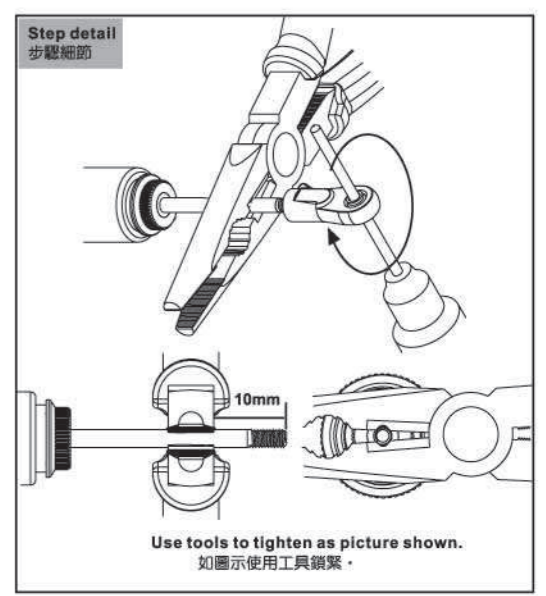
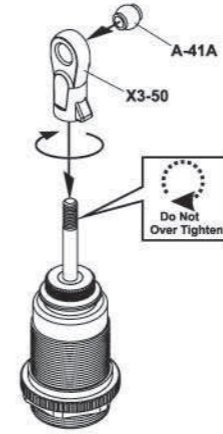


Fit the o-ring into groove before assembly.  
將O環預先裝入調整環的溝槽內



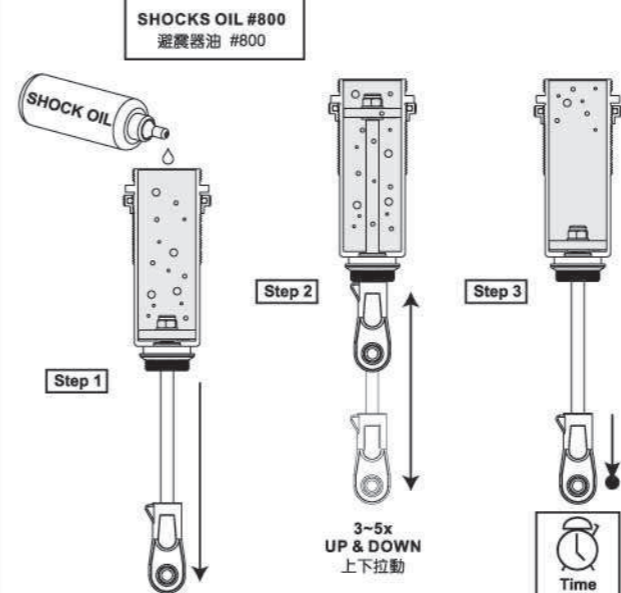
**53 ASSEMBLY OF THE SHOCK BALL END**  
組合避震器

BAG NO.10 x4



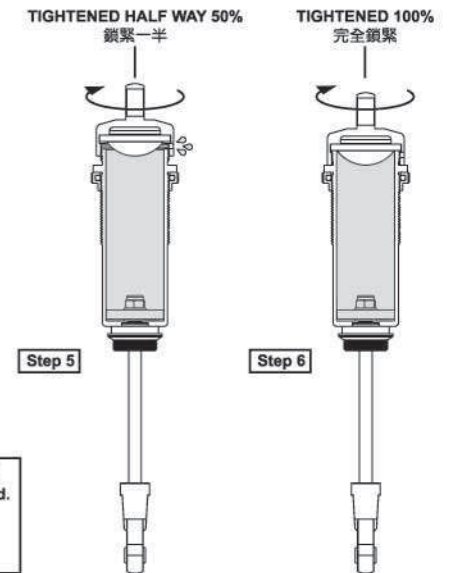
**54 SETTING THE SHOCK**  
設置避震器

BAG NO.10 x4



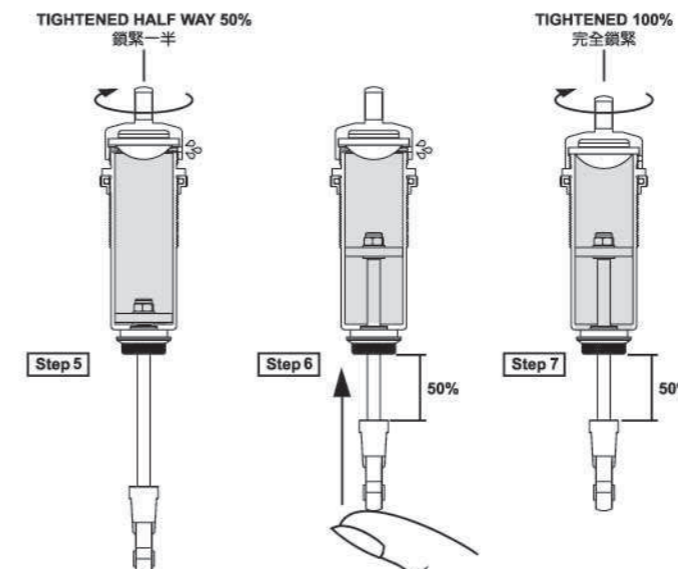
● Leave the filled shock vertically for several minutes with the shock shaft fully extended.  
將避震軸心下拉到底垂直放置幾分鐘。  
● The remaining air bubbles will release.  
剩餘空氣氣泡會消散。

**REBOUND TO 100% (HIGH REBOUND)**  
設置避震器反彈到 100% (高反彈)

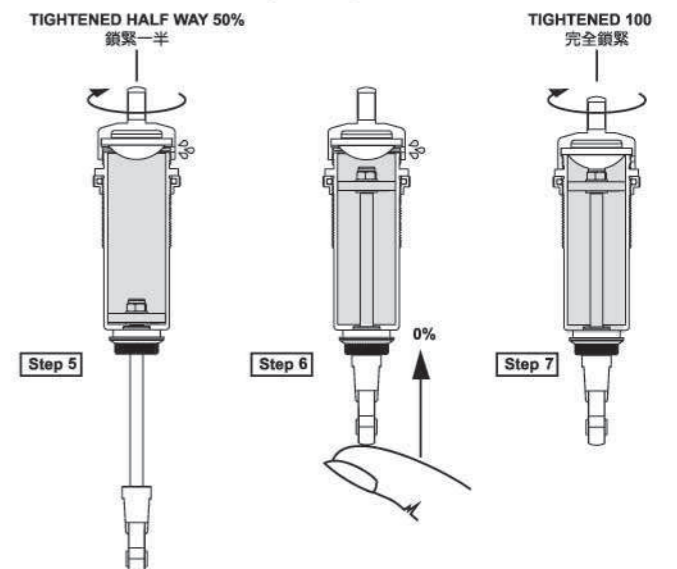


**55 SETTING THE SHOCK REBOUND TO 50% (MEDIUM REBOUND)**  
設置避震器反彈到 50% 適中反彈

**55 SETTING THE SHOCK REBOUND TO 50% (MEDIUM REBOUND)**  
設置避震器反彈到 50% 適中反彈

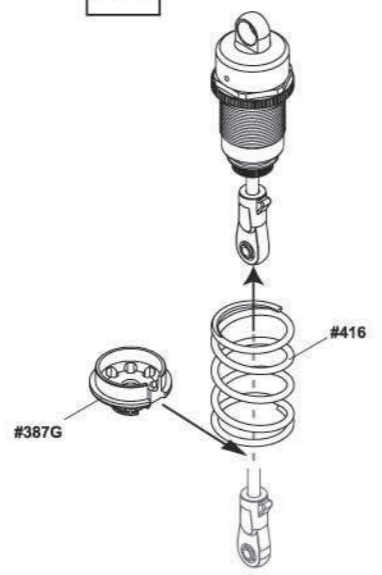


**SETTING THE SHOCK REBOUND TO 0% (LOW REBOUND)**  
設置避震器反彈到 0% (低反彈)



**56 ASSEMBLY OF THE SHOCKS SPRING**  
組合避震器彈簧

**BAG NO.10 x4**

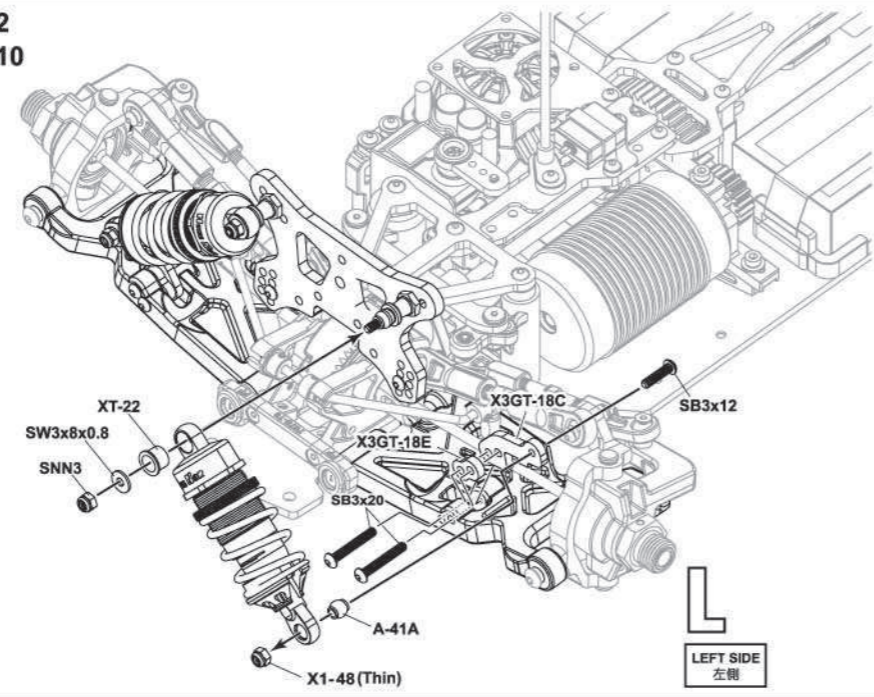


**57 ASSEMBLY OF THE SHOCKS INTO THE FRONT SHOCK STAY**  
組合避震器至前油壓架

**BAG NO.2 NO.10**

- X1-48 Nylon Nut (Thin) 薄尼龍螺帽 .....x2
- SNN3mm Nylon Nut 尼龍螺帽 .....x2
- SW3x8x0.8mm Washer 墊片 .....x2
- SB3x12mm Hex Screw 半丸內六角螺絲 .....x2
- SB3x20mm Hex Screw 半丸內六角螺絲 .....x4

**R** Right side 右側  
Assemble both right and left sides. 請組合左/右兩側。

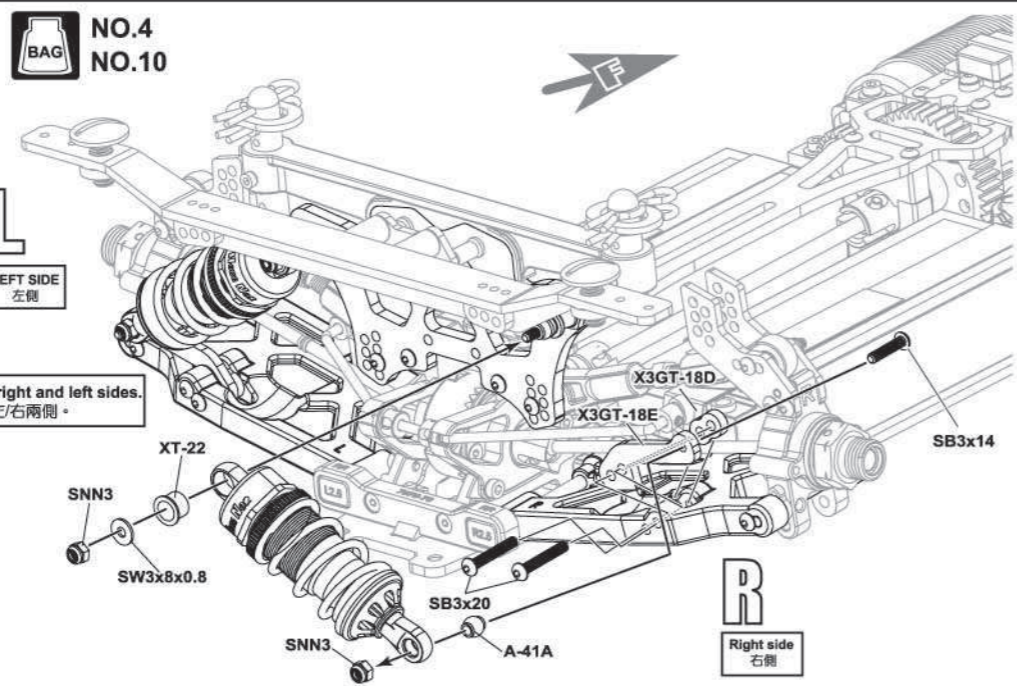


**58 ASSEMBLY OF THE SHOCKS INTO THE REAR SHOCK STAY**  
組合避震器至後油壓架

**BAG NO.4 NO.10**

- SNN3mm Nylon Nut 尼龍螺帽 .....x4
- SW3x8x0.8mm Washer 墊片 .....x2
- SB3x14mm Hex Screw 半丸內六角螺絲 .....x2
- SB3x20mm Hex Screw 半丸內六角螺絲 .....x4

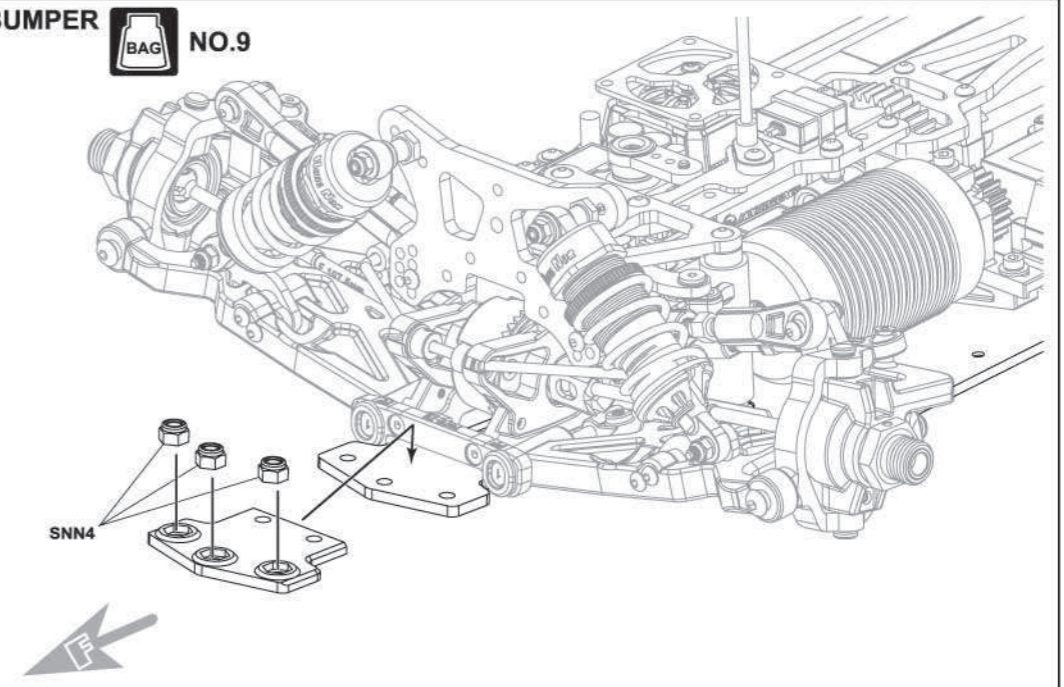
**L** LEFT SIDE 左側  
Assemble both right and left sides. 請組合左/右兩側。



**59 ASSEMBLY OF THE FRONT BUMPER**  
前防撞板組合

**BAG NO.9**

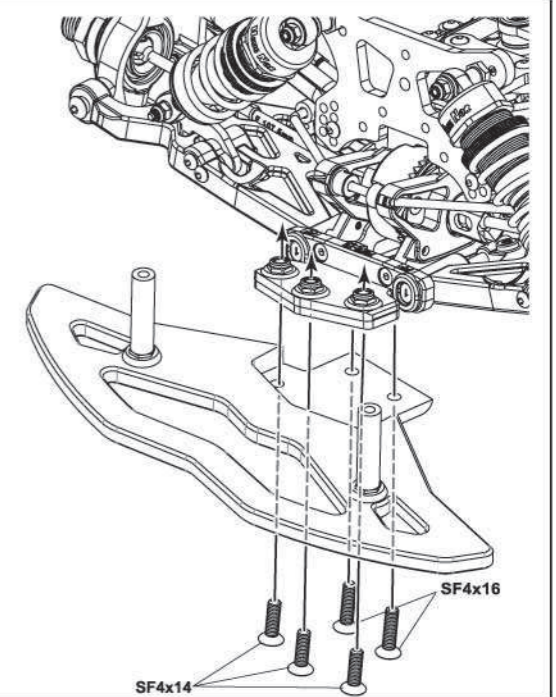
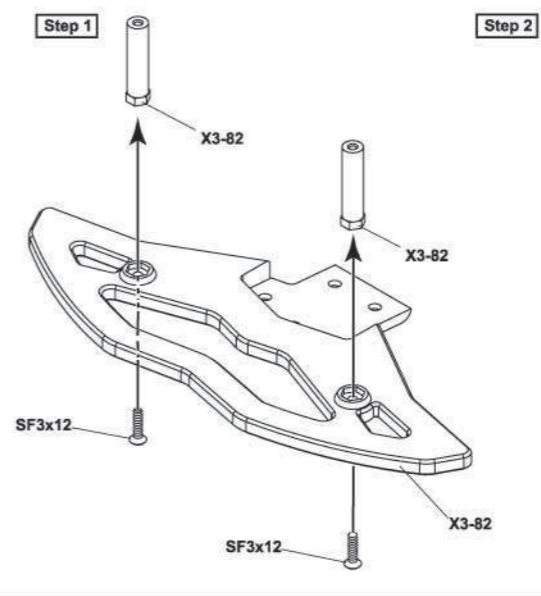
- SNN4mm Nylon Nut 尼龍螺帽 .....x3



**60 ASSEMBLY OF THE FRONT BUMPER**  
前防撞板組合

**BAG NO.2 NO.9**

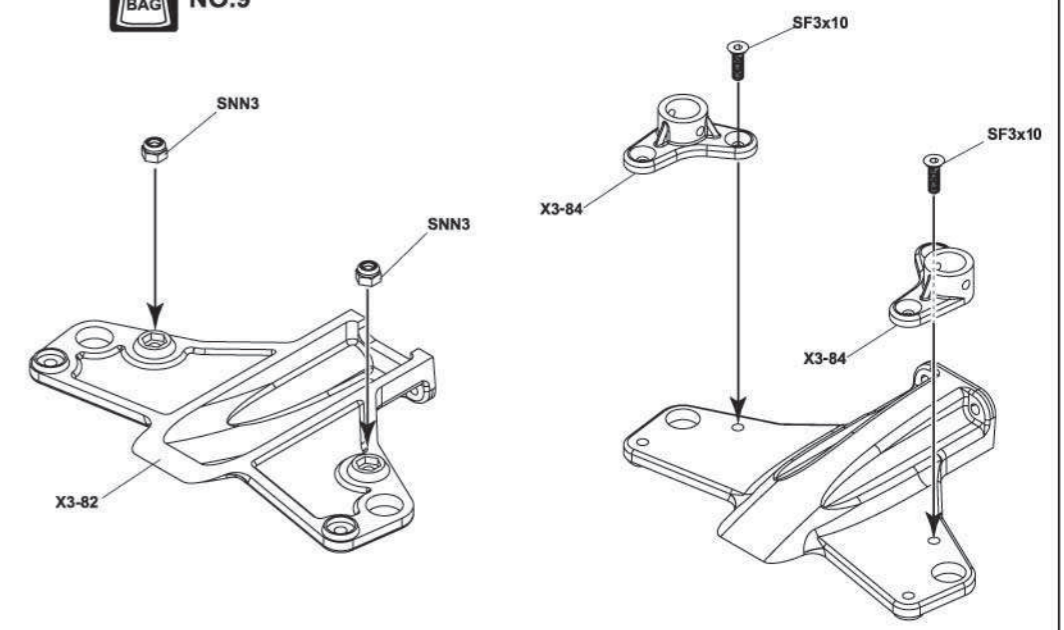
- SF3x12mm Flat Head Hex Screw 皿頭內六角螺絲 .....x2
- SF4x14 Flat Head Hex Screw 皿頭內六角螺絲 .....x3
- SF4x16 Flat Head Hex Screw 皿頭內六角螺絲 .....x2



**61 ASSEMBLY OF THE FRONT BUMPER**  
前防撞板組合

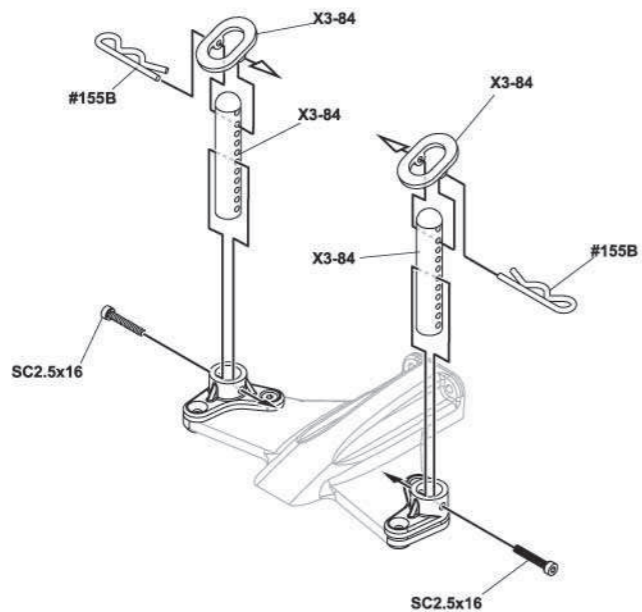
**BAG NO.9**

- SNN3mm Nylon Nut 尼龍螺帽 .....x2
- SF3x10mm Flat Head Hex Screw 皿頭內六角螺絲 .....x2

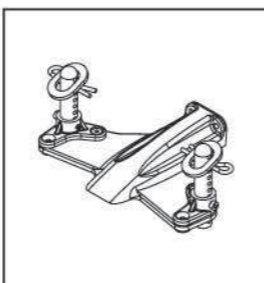


**62 ASSEMBLY OF THE FRONT BUMPER**  
前防撞板組合

**BAG NO.9**

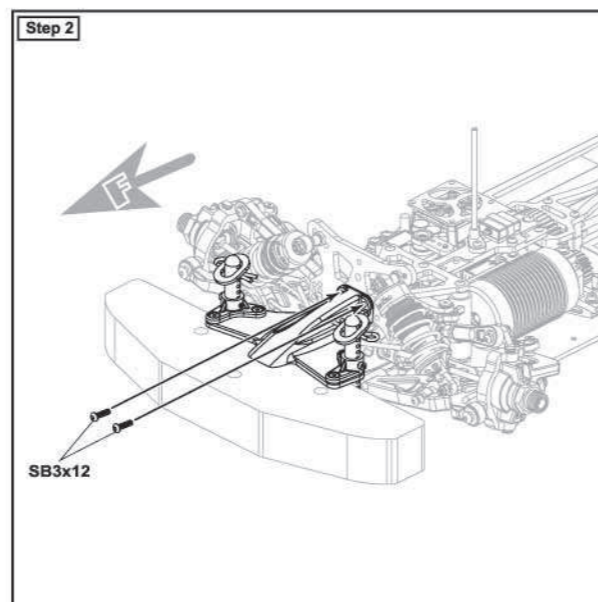
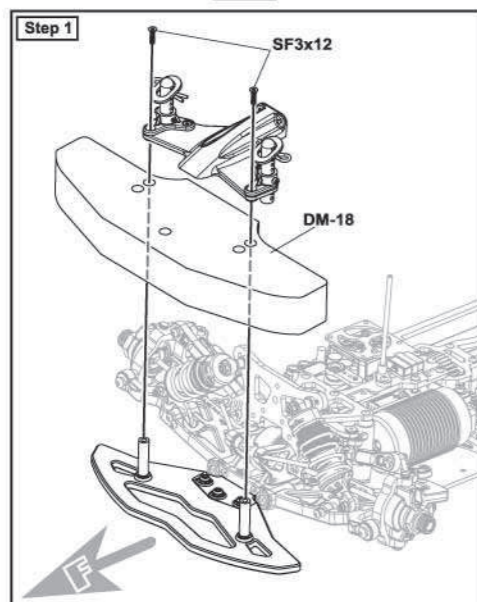


Step detail  
步驟細節



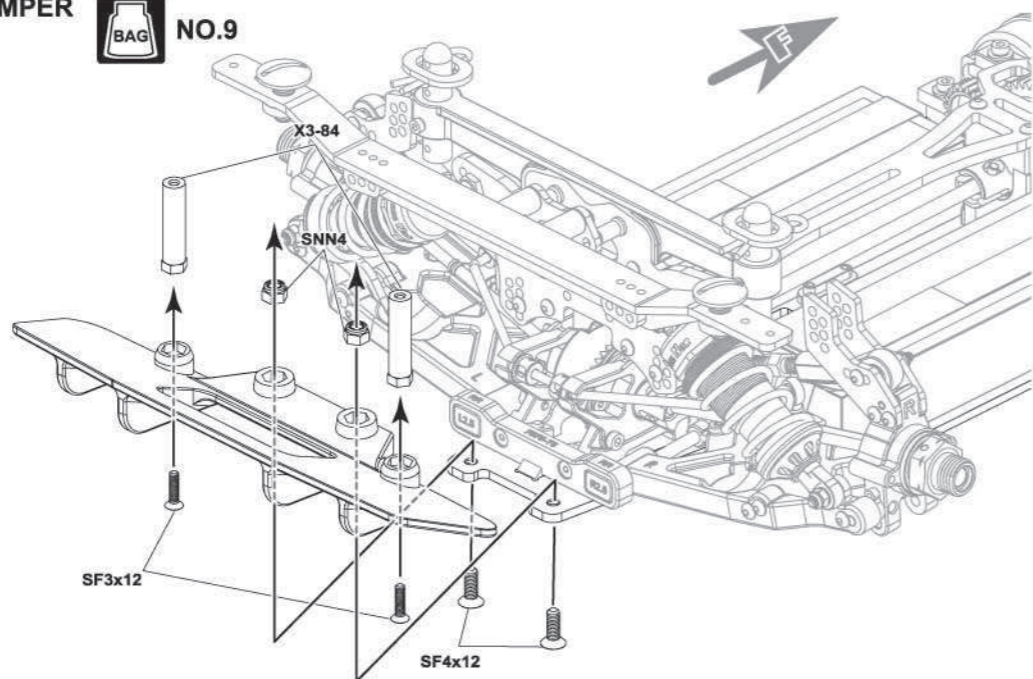
**63 ASSEMBLY OF THE FRONT BUMPER**  
前防撞板組合

**BAG NO.9**



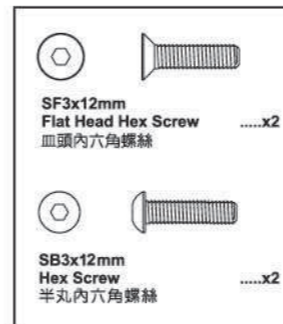
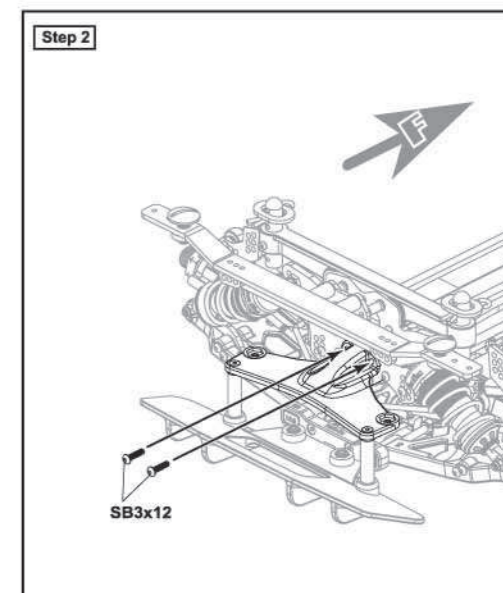
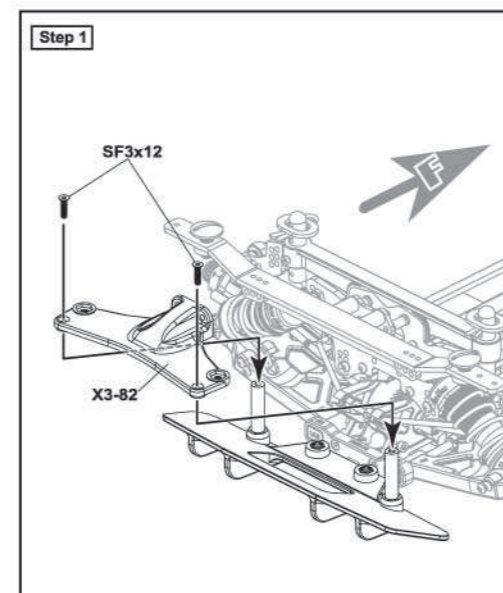
**64 ASSEMBLY OF THE REAR BUMPER**  
後防撞板組合

**BAG NO.9**



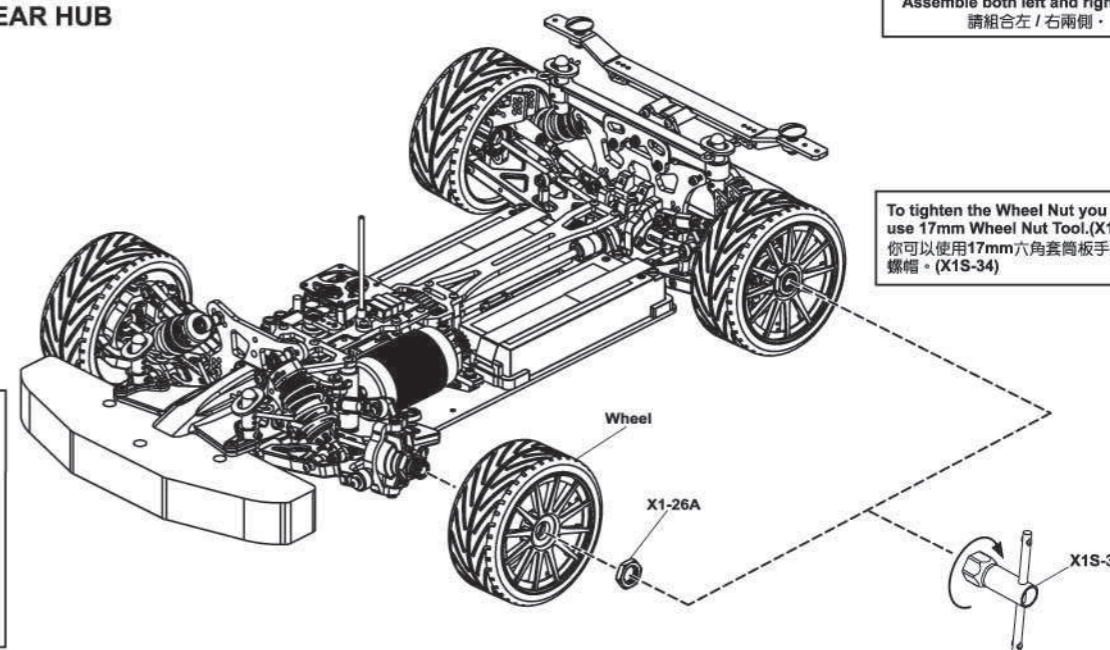
**65 ASSEMBLY OF THE REAR BUMPER**  
後防撞板組合

**BAG NO.9**

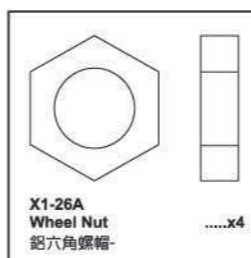


**66 ASSEMBLY OF THE TIRES ONTO THE FRONT KNUCKLE AND REAR HUB**  
組合輪胎至車體

Assemble both left and right sides.  
請組合左 / 右兩側。

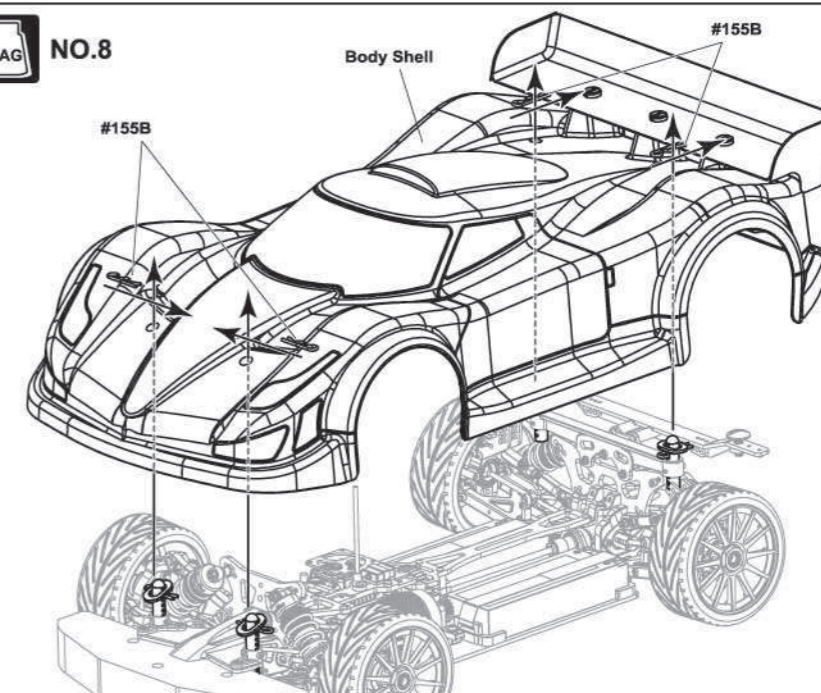


To tighten the Wheel Nut you can also use 17mm Wheel Nut Tool.(X1S-34)  
你可以使用17mm六角套筒板手鎖緊輪框螺帽。(X1S-34)



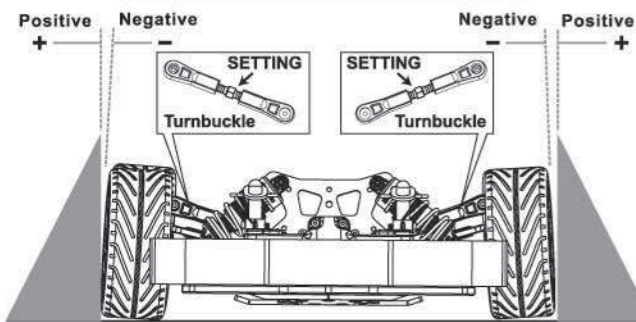
**67 MOUNTING THE BODY SHELL**  
安裝車殼

**BAG NO.8**



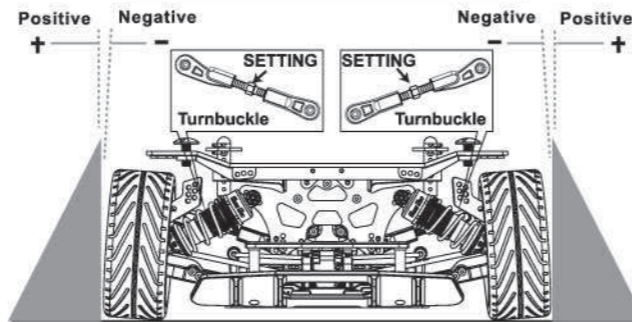
## SETTING GUIDE

### FRONT CAMBER ANGLE SETTING



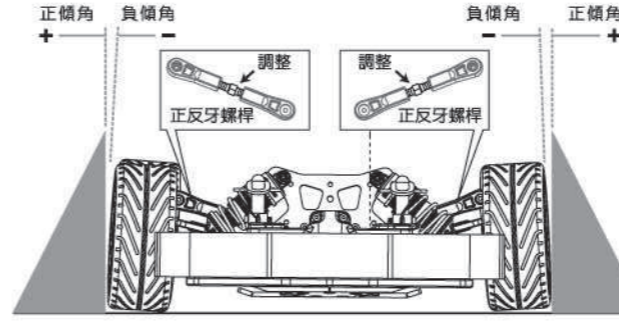
- Place the model car on flat surface. Raise the chassis to its maximum clearance before the wheels leave the ground.
- Adjust the length of the front and rear upper arms so that the wheels are vertical to the ground.
- Adjust the camber angle by turning the turnbuckle rod on the upper arms clockwise or anti-clockwise. (We suggest to use zero degree for the front and 1.5 degree negative for the rear.)

### REAR CAMBER ANGLE SETTING



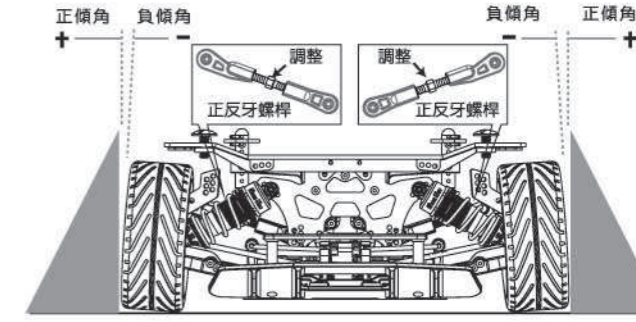
## 輪胎角度設定

### 前胎傾角調整

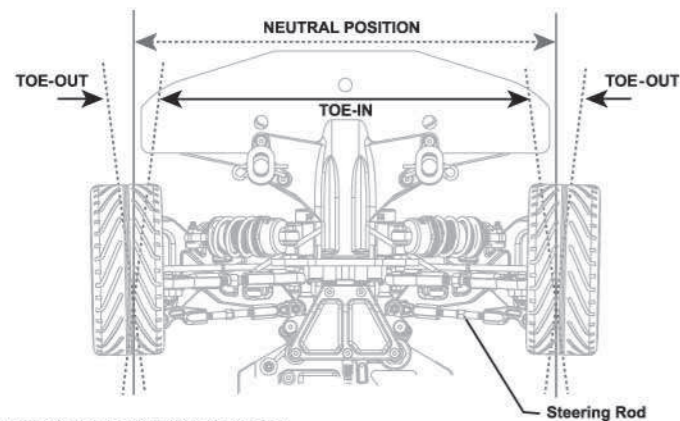


- 將車體放置在平整桌面上並保持在正確離地高度。調整上擺臂長度使輪胎與地面垂直(0度)。
- 調整上擺臂“正反牙螺桿”長度可改變正負傾角設定。加長上擺臂--傾角變為--正傾角。縮短上擺臂--傾角變為--負傾角。(我們建議前輪為0度,後輪為負1.5度。)

### 後胎傾角調整



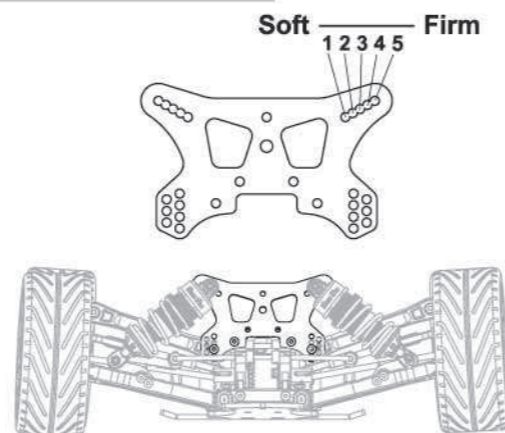
### FRONT TOE-IN AND TOE-OUT SETTING



- Adjust the length of front steering rod to change the toe angle.
- Making the tie rod longer will make front tires toed in.
- Response will be slower and may over steer.
- Making the tie rod shorter will make front tires toed out.
- Response will be quicker and may under steer.

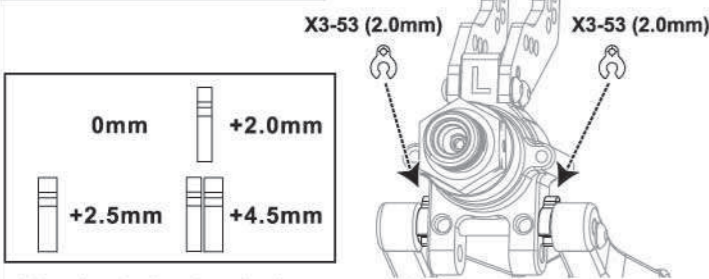
- Different shock positions will result in firmer or softer response of the suspension system.
- Install the shock in an inward angle will cause softer rebound. Softer or firmer suspension system will lead to different steering response.
- Adjust the shock angle positions according to track conditions.

### FRONT SHOCK ANGLE SETTING



Firm front suspension, less steering.  
Soft front suspension, more steering.

### REAR WHEELBASE

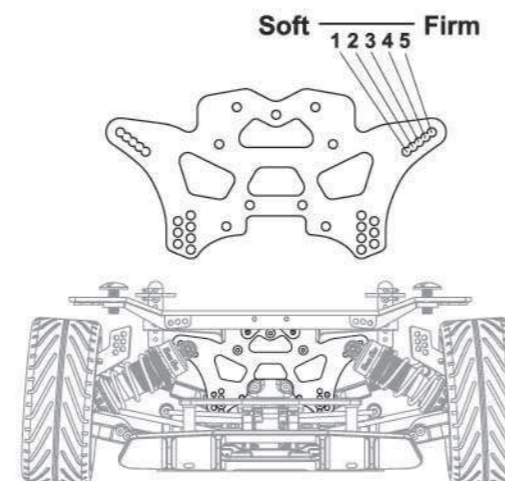


Adjust the wheelbase by using the spacers on either side of the rear wheel hub (at the bottom pin). **IMPORTANT!** Make equal adjustments on both left and right sides of the car.

- Shorter wheelbase**  
less spacers in front of the rear wheel hub.
- increases rearward weight transfer during acceleration.
  - increases on-power traction.
  - quicker off-power steering into corners.
  - slight tendency to push on-power at corner exit.
  - increases steering response.
  - better on tighter, more technical tracks.

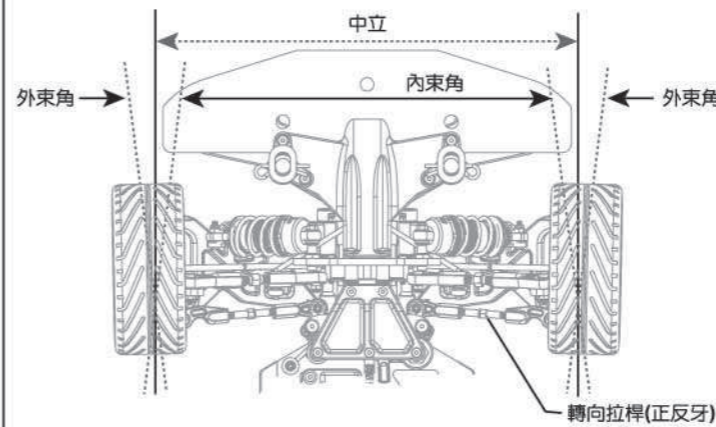
- Longer wheelbase**  
more spacers in front of the rear wheel hub.
- decreases off-power steering into sharp corners.
  - increases stability.
  - slower initial steering reaction (off-power).
  - improves on-power steering at corner exit.
  - better handling over bumps and ruts.
  - better on more open tracks with high-speed corners.

### REAR SHOCK ANGLE SETTING



Firm rear suspension, over steering.  
Soft rear suspension, under steering.

### 前輪內束角/外束角 調整

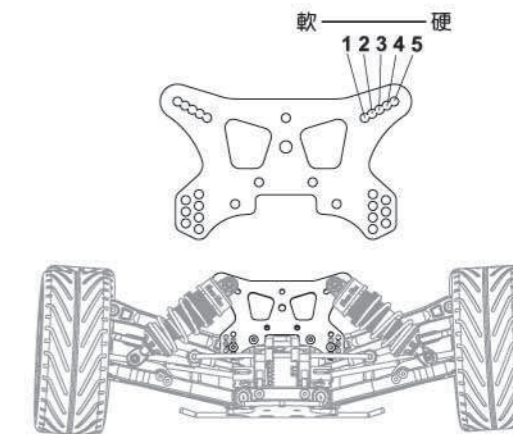


改變前輪轉向拉桿之長度可以改變前輪“內束角”與“外束角”。

1. 將前輪轉向拉桿加長, 前輪會變成內束角。此時轉向反應會變慢, 並且有轉向過度情形產生。
2. 將前輪轉向拉桿變短, 前輪會變成外束角。此時轉向反應會變快, 並且有轉向不足情形產生。

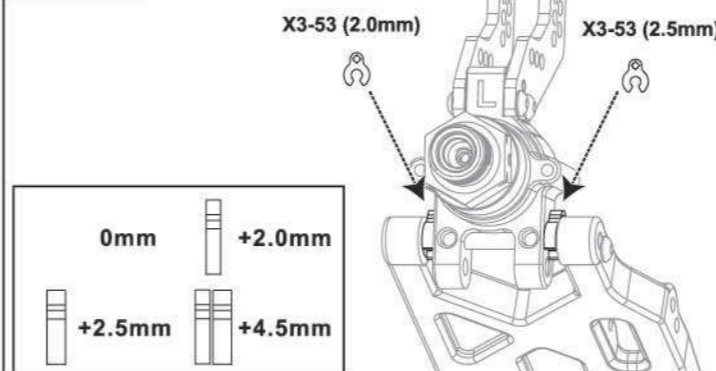
- 油壓避震器會因安裝在不同位置, 而使懸吊系統產生不同硬軟變化。
- 油壓避震器裝配位置愈往車體中心, 懸吊反應變軟。前輪懸吊系統較硬不同, 會產生不同轉向特性。
- 油壓避震器按裝孔位, 請依場地不同而調整在不同位置。

### 前油壓避震器角度調整



前輪硬-轉向不足  
前輪軟-轉向過度

### 後輪軸距



- 透過使用在後輪座的插扣來調整軸距。
- 重要事項：後輪座左右邊的插扣必需相同。

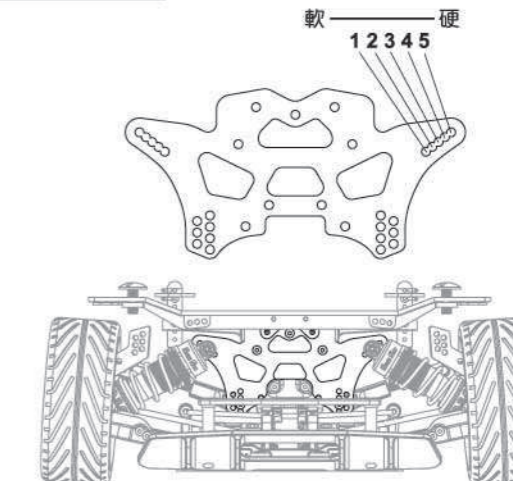
#### 短軸距

- 在後輪座的前方減少插扣。
- 在加速時增加重心向後移動。
  - 油門開啟時增加抓地力。
  - 油門關閉時轉向會進彎角較靈敏。
  - 油門開啟時出彎有輕微的轉向不足。
  - 增加轉向反應。
  - 對於較急彎與技術性跑道有較好操控性。

#### 長軸距

- 在後輪座的前方增加插扣。
- 減少加速度時重心向後移動。
  - 增加行車穩定性。
  - 最初操控反應緩慢(油門關閉時)。
  - 改善油門開啟時的出彎性。
  - 在不良起伏及凹凸路面有較好操控性。
  - 在較寬及高速彎角跑道有較好的控制性。

### 後油壓避震器角度調整



後輪硬-轉向過度  
後輪軟-轉向不足



NAME \_\_\_\_\_ RACE \_\_\_\_\_ DATE \_\_\_\_\_  
 TRACK \_\_\_\_\_ CITY/COUNTRY \_\_\_\_\_ TRACK CONDITION \_\_\_\_\_

## X3 GT 2023

### 1/8 ELECTRIC POWERED GT SET-UP SHEET

AIR TEMP \_\_\_\_\_ F \_\_\_\_\_ C  
 LAPS \_\_\_\_\_  
 BEST LAP TIME \_\_\_\_\_ in LAP  
 TRACK SIZE \_\_\_\_\_  
 OPEN  MEDIUM  TIGHT  
 TRACK TRACTION \_\_\_\_\_  
 HIGH  MEDIUM  LOW

**DIFFERENTIAL OIL**

FRONT \_\_\_\_\_ REAR \_\_\_\_\_  
 STD \_\_\_\_\_ STD \_\_\_\_\_

OIL wt. \_\_\_\_\_ OIL wt. \_\_\_\_\_  
 FRONT \_\_\_\_\_ REAR \_\_\_\_\_

**GEARING**

SPUR GEAR \_\_\_\_\_ T  
 PINION GEAR \_\_\_\_\_ T

**TIRES**

FRONT TYPE \_\_\_\_\_  
 COMPOUND \_\_\_\_\_  
 INSERT FOAM \_\_\_\_\_

REAR TYPE \_\_\_\_\_  
 COMPOUND \_\_\_\_\_  
 INSERT FOAM \_\_\_\_\_

**ELECTRIC MOTOR**

TURN \_\_\_\_\_ /  
 RPM \_\_\_\_\_  
 KV \_\_\_\_\_  
 BRAND \_\_\_\_\_

**ELECTRIC SPEED CONTROLLER**

BRAND \_\_\_\_\_  
 TYPE \_\_\_\_\_

**FRONT**

STEERING BAR  
 A  B  C

STEERING KNUCKLE ARM  
 PLASTIC  
 ALUM

C-HUB  
 12°  PLASTIC  
 10°  ALUM  
 6°  ALUM  
 0°

INSERT NR. **1**

DROOP **3mm**

RIDE HEIGHT \_\_\_\_\_ mm  
 SWAY BAR **2.5** mm  
 CAMBER ANGLE **-2** °  
 TOE ANGLE **+1** °

**SHOCK FRONT**

SHOCK LENGTH \_\_\_\_\_ mm  
 OIL wt. **800**  
 PISTON **1.4** mm  
 SPRING **2.3**

TOTAL CASTER  
 13°  16.5°  
 13.5°  17°  
 14°  17.5°  
 14.5°  18°  
 15°  18.5°  
 15.5°  19°  
 16°

INSERT NR. **0.5**

**REAR**

WHEEL HUB  
 PLASTIC  
 ALUM

RIDE HEIGHT \_\_\_\_\_ mm  
 SWAY BAR **2.8** mm  
 CAMBER ANGLE **-2.5** °

INSERT NR. **2.5**

DROOP **7mm**

**SHOCK REAR**

SHOCK LENGTH \_\_\_\_\_ mm  
 OIL wt. **800**  
 PISTON **1.4** mm  
 SPRING **2.3**

WHEELBASE SHIMS  
 0mm  2mm  
 2.5mm  4.5mm

INSERT NR. **2**

NAME \_\_\_\_\_ RACE \_\_\_\_\_ DATE \_\_\_\_\_  
 TRACK \_\_\_\_\_ CITY/COUNTRY \_\_\_\_\_ TRACK CONDITION \_\_\_\_\_

## X3 GT 2023

### 1/8 ELECTRIC POWERED GT SET-UP SHEET

AIR TEMP \_\_\_\_\_ F \_\_\_\_\_ C  
 LAPS \_\_\_\_\_  
 BEST LAP TIME \_\_\_\_\_ in LAP  
 TRACK SIZE \_\_\_\_\_  
 OPEN  MEDIUM  TIGHT  
 TRACK TRACTION \_\_\_\_\_  
 HIGH  MEDIUM  LOW

**DIFFERENTIAL OIL**

FRONT \_\_\_\_\_ REAR \_\_\_\_\_  
 STD \_\_\_\_\_ STD \_\_\_\_\_

OIL wt. \_\_\_\_\_ OIL wt. \_\_\_\_\_  
 FRONT \_\_\_\_\_ REAR \_\_\_\_\_

**GEARING**

SPUR GEAR \_\_\_\_\_ T  
 PINION GEAR \_\_\_\_\_ T

**TIRES**

FRONT TYPE \_\_\_\_\_  
 COMPOUND \_\_\_\_\_  
 INSERT FOAM \_\_\_\_\_

REAR TYPE \_\_\_\_\_  
 COMPOUND \_\_\_\_\_  
 INSERT FOAM \_\_\_\_\_

**ELECTRIC MOTOR**

TURN \_\_\_\_\_ /  
 RPM \_\_\_\_\_  
 KV \_\_\_\_\_  
 BRAND \_\_\_\_\_

**ELECTRIC SPEED CONTROLLER**

BRAND \_\_\_\_\_  
 TYPE \_\_\_\_\_

**FRONT**

STEERING BAR  
 A  B  C

STEERING KNUCKLE ARM  
 PLASTIC  
 ALUM

C-HUB  
 12°  PLASTIC  
 10°  ALUM  
 6°  ALUM  
 0°

INSERT NR. \_\_\_\_\_

DROOP \_\_\_\_\_ mm

RIDE HEIGHT \_\_\_\_\_ mm  
 SWAY BAR \_\_\_\_\_ mm  
 CAMBER ANGLE \_\_\_\_\_ °  
 TOE ANGLE \_\_\_\_\_ °

**SHOCK FRONT**

SHOCK LENGTH \_\_\_\_\_ mm  
 OIL wt. \_\_\_\_\_  
 PISTON \_\_\_\_\_ mm  
 SPRING \_\_\_\_\_

TOTAL CASTER  
 13°  16.5°  
 13.5°  17°  
 14°  17.5°  
 14.5°  18°  
 15°  18.5°  
 15.5°  19°  
 16°

INSERT NR. \_\_\_\_\_

**REAR**

WHEEL HUB  
 PLASTIC  
 ALUM

RIDE HEIGHT \_\_\_\_\_ mm  
 SWAY BAR \_\_\_\_\_ mm  
 CAMBER ANGLE \_\_\_\_\_ °

INSERT NR. \_\_\_\_\_

DROOP \_\_\_\_\_ mm

**SHOCK REAR**

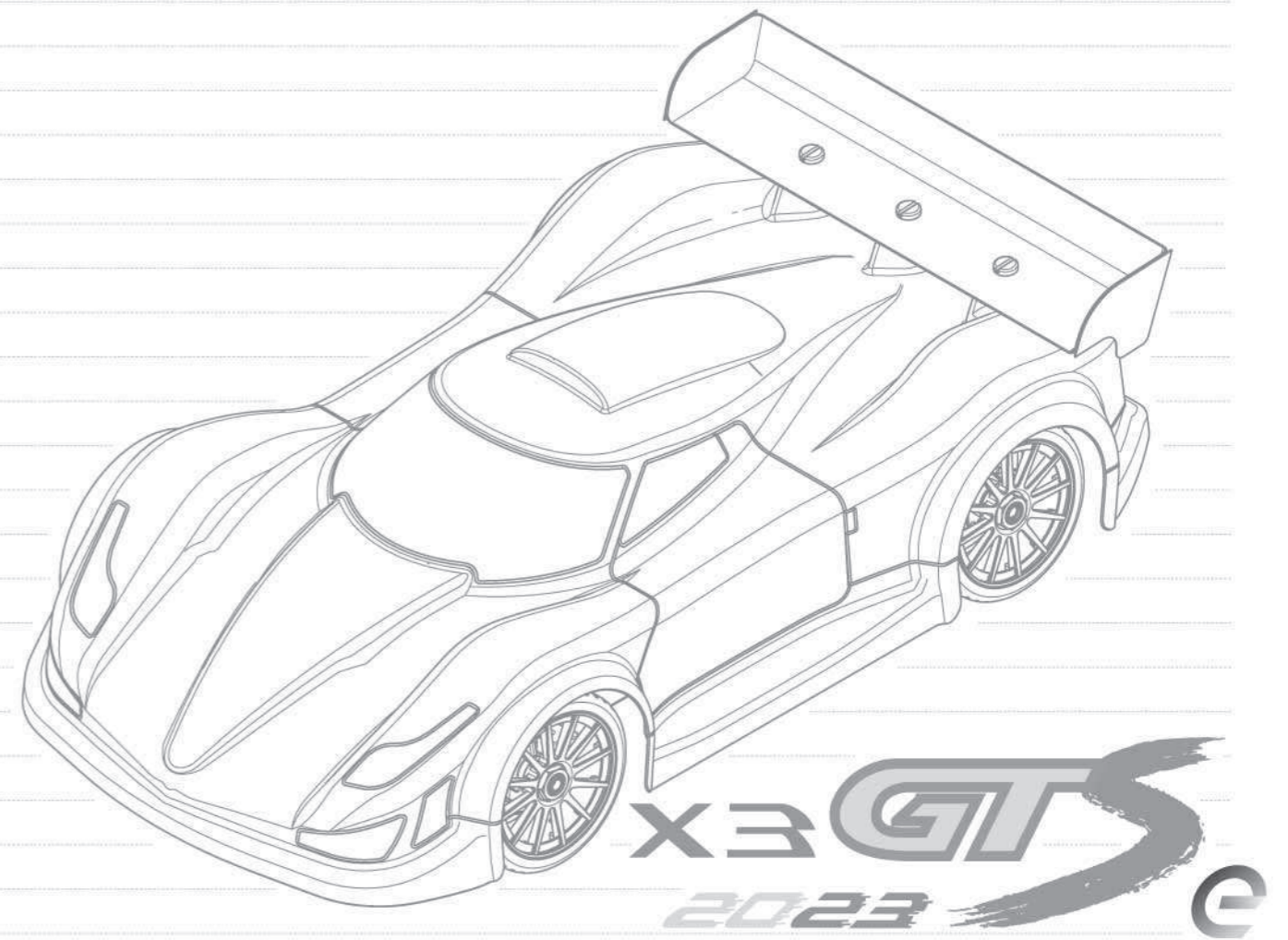
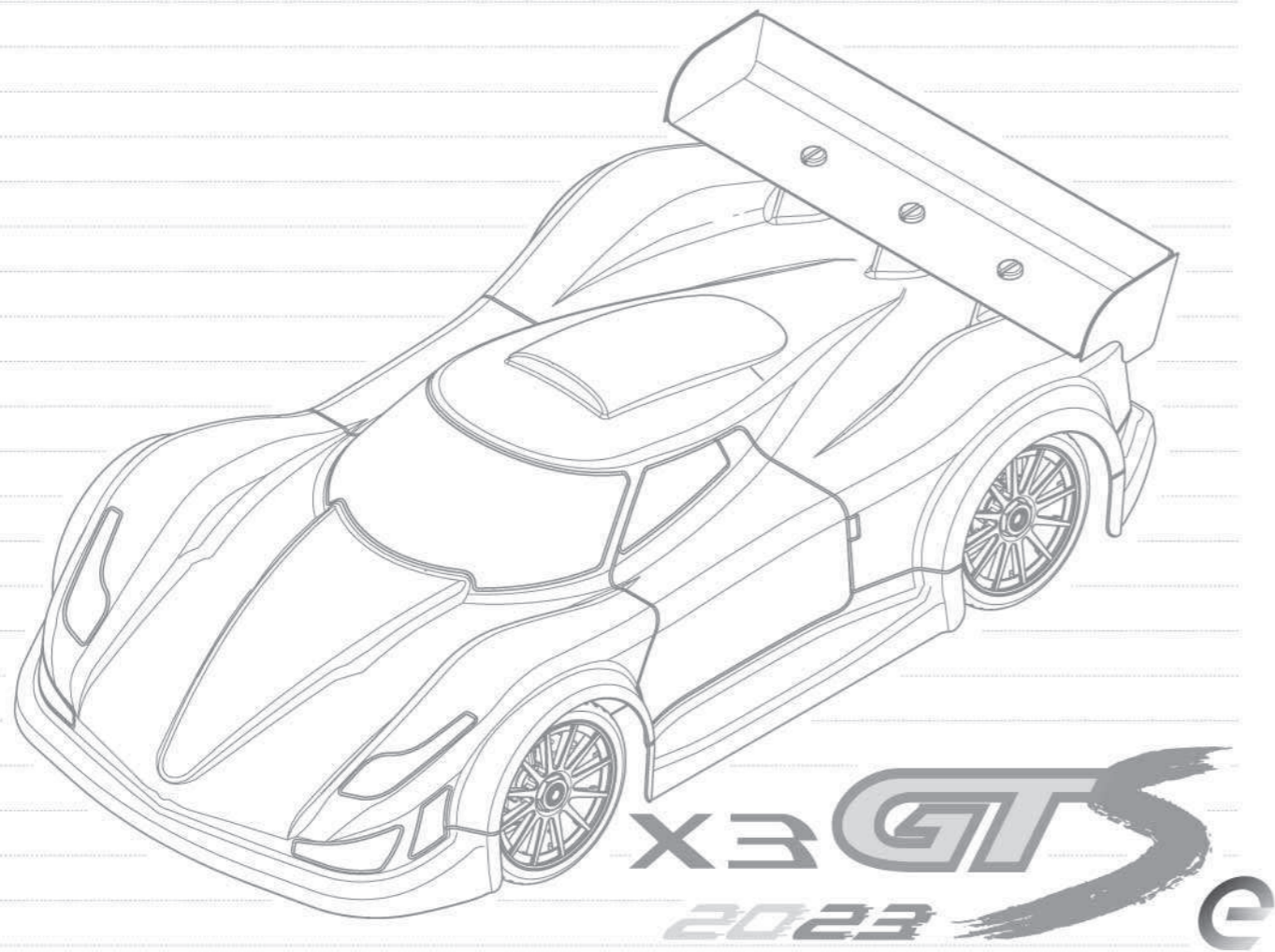
SHOCK LENGTH \_\_\_\_\_ mm  
 OIL wt. \_\_\_\_\_  
 PISTON \_\_\_\_\_ mm  
 SPRING \_\_\_\_\_

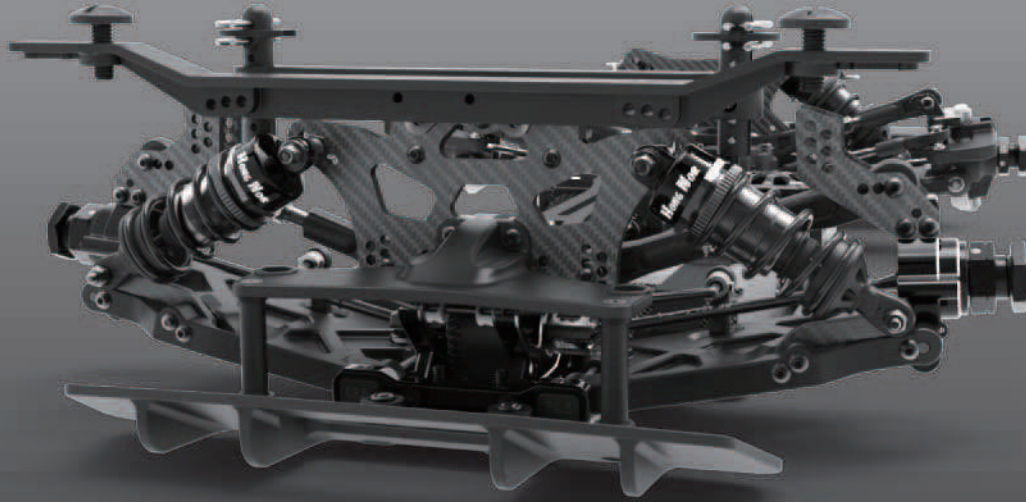
WHEELBASE SHIMS  
 0mm  2mm  
 2.5mm  4.5mm

INSERT NR. \_\_\_\_\_

X3-GTS e 2023 Kit Parts List					
Item	Description	Qn'ty	Item	Description	Qn'ty
A-34B	Stabilizer Ball End	2	X3S-42A	Swaybar Inserts (2) From 2-2.4mm	2
A-41A	6mm Ball	6	X3S-42B	Swaybar Inserts (2) From 2.5-3mm	2
C-27	Servo Fixing	1 set	X3S-49	Alum. Rear Wheel Hub, Carbon Plate (GT)	1 set
DM-18	Foam Bumper	1	X3GT-11	Servo Saver Spring - Hard	1
DM-31	Centre Gear Mount	1	X3GT-18C	3mm microfiber front shock end plate	2
E-21	M3 x 15 Turnbuckle	2	X3GT-18D	3mm microfiber rear shock end plate	2
E-37	6mm Ball & Socket	6	X3GT-18E	3mm 8 shape spancer	2
G-19	4x46 Turnbuckle	4	X3GT-22	Front Anti-roll Bar 25mm	1
G-25	7mm Ball	6	X3GT-24	Rear Body Fasten Set	1 set
G-26	5x35 Turnbuckle	2	X3GT-29	Alum. Differential Holder	1 set
J-03A	P-6 O-Ring	2	X3GT-30	Alum. Differential Bearing mount	1 set
J-20	Diff Bevel Gear Shim 13x16x0.2mm	4	X3GT-31	Alum. Front Arm Mount	1
JS-14B	6x10 Ball Bearing	4	X3GT-34	Alum. Rear Toe-in Mount	1
K-11A	Insert for Servo Saver	3	X3GT-36A	Carbon 4mm Microsoft Front Shock Tower	1
LS-28B	Plastic Rod End	2	X3GT-36B	Carbon 4mm Microsoft Rear Shock Tower	1
X1-26BK	17mm Wheel Hub	2	X3GT-39	Main Cup Joint Axle	1
X1-27	Knuckle Arm Bushing	4	X3GT-40	Cup Joint for Planet Gear	2
X1-31	Shock Ball End Post / one- piece / Top	4	X3GT-43	Topdeck Carbon	1 set
XT-09B	125.5mm Center Shaft	1	X3GT-45	CNC 7075 Suspension Bracket, FR (+6°)	1
XT-22	Plastic Shock Parts Set	1 set	X3GT-46	CNC 7075 Suspension Bracket, RF (+2°)	1
XT-31	Plastic Center Diff. Mount	1 set	X3GT-47	CNC 7075-3mm Light Weight Chassis	1
X3-01	Spiral Bevel Gear 43t	1	X3GT-48	Front Topdeck, Carbon	1
X3-02	Spiral Bevel Gear 13t	1	X3GT-49	Rear Topdeck, Carbon	1
X3-03	Diff Gear 10Tx4, 20Tx2	1set	X3GT-50	CNC Chassis Brace Mount	1
X3-04A	Front CVD Drive Shaft 107.5mm	2	X3GT-51	Center Diff Upper Cap, Alum.	1
X3-05A	Rear CVD Drive Shaft 105mm	2	X3GT-52	Servo Holder, Alum.	2
X3-06	Drive Shaft Insert / 2.5 x12.8 Pin	4	X3GT-53	Steering Servo Saver, Alum.	1
X3-07	CVD Wheel Axle	2	X3GT-57	Fan Mounting Carbon Plate For 40mm Fan	1
X3-13	3 5 x 45 8 Rear Hub Shaft	2	X3GT-58	81.5mm Central Shaft	1
X3-14	Steering King Pin	4	X3.6-07	4x67 6mm Arms Shaft	2
X3-16	Servo Saver Post	2	X3.6-13B	Center Diff Holder	2
X3-17	Alum. Servo Saver Tube	1	#155B	Body Clips	4
X3-19	Servo Saver Adjuster Oring	1set	#267D	8x16 Ball Bearing	8
X3-20-BK	Servo Saver Connecting Plate B, Black	1	#267E	2.5 x 16.8 Pin	4
X3-21	Servo Saver Screws	2	#277A	5x8 Flange Bearing	2
X3-22	Servo Saver Bushing	2	#294D	46T 2nd Spur Gear	1
X3-31	7x8 5mm Ball & Socket	4	#309B	Alum. Nut (clockwise)	1
X3-32	7x12mm Ball & Socket	4	#312-BK	Universal Servo Horn (BLACK)	1set
X3-34	2.5x11 8 Pins	10	#363	Alum. Diff Cross Pin (Hard-Coated)	6
X3-35	2.5 x12.8 Pins	10	#387C-BK	16mm Shock Cap (Laser Etched)	4
X3-38	Diff Gasket 31x20x0.3	3	#387D-BK	16mm Shock Spring Adjuster, Black	4
X3-43	Diff Case (F&R)	1	#387E	10 x 1mm O-Ring	4
X3-45	Front Lower Arms L,R	1set	#387F	19 x 1.5mm O-Ring	4
X3-45B	Front Arm Bushing	4	#387G	Plastic Shock Spring Holder	1set
X3-46	Suspension Bracket Inserts	1set	#387P	16mm Shock Piston	1set
X3-47	Steering Knuckle Arm L,R	1set	#387S	Repair Kit for #387	1set
X3-50	Plastic Rod End	1set	#388	16mm Pressure Top (Orange)	4
X3-51	Servo Saver Set/Front Top Deck	1set	#397-17	17T, Pinion Gear 5mm M1	1set
X3-53	Rear Lower Arms L,R	1set	#415BK	CNC Alum.Motor Mount	1set
X3-61	8x14 Ball Bearing	4	#416	16mm GT Shock Spring Set, 2.3mm	1set
X3-62	13x20 Ball Bearing	4	#418A	Shock Shaft, Front 45mm	2
X3-82	Front, Rear Bumper	1set	#418B-G	16mm Front Shock Body	2
X3-84	Body Post	1set	#445	Battery Straps, Black	2
X3-89	Rear Anti-roll Bar 2.8mm	1	#446	Antenna Holder	1
X3S-04	Diff Cap Joint (Lightweight)	2	#447	Battery Mount	1set
X3S-15-BK	17mm Wheel Hub+1.9mm, Black	2			
X3S-19	CNC C Hub, 10 Degree	1 set			
X3S-37A	5x16 Bearing	2			

X3-GTS e 2023 KIT 零件表					
編號	品名	數量	編號	品名	數量
A-34B	防傾桿球型	2	X3S-42A	防傾桿輪檔 (2-2.4mm)	2
A-41A	6mm 球形	6	X3S-42B	防傾桿輪檔 (2.5-3mm)	2
C-27	伺服機固定座	1 set	X3S-49	鋁合金後輪座+碳纖支撐板組	1 set
DM-18	海綿防撞板-V2	1	X3GT-11	緩衝組彈簧(硬)	1
DM-31	大齒固定鋁座	1	X3GT-18C	3mm碳纖前避震下支座	2
E-21	3x15mm正反牙	2	X3GT-18D	3mm碳纖後避震下支座	2
E-37	6mm球型座	6	X3GT-18E	3mm 8字形墊片	2
G-19	4x46 正反牙(黑)	4	X3GT-22	前防傾桿 2.5mm	1
G-25	7mm球型	6	X3GT-24	後車殼固定架組	1 set
G-26	5x35mm正反牙(黑)	2	X3GT-29	CNC 鋁合金差速器固定座	1 set
J-03A	P6 O環	2	X3GT-30	CNC 鋁合金差速器培林座	1 set
J-20	13x16x0.2mm 墊片(鋼)	4	X3GT-31	CNC 前下擺臂固定座(前)	1
JS-14B	6x10 培林	4	X3GT-34	CNC 後Toe-in固定座	1
K-11A	伺服轉接座(S. J. F)	3	X3GT-36A	4mm碳纖前油壓架	1
LS-28B	塑膠拉桿頭	2	X3GT-36B	4mm碳纖後油壓架	1
X1-26BK	8mm六角輪座(黑)	2	X3GT-39	大齒軸心	1
X1-27	轉向襯套	4	X3GT-40	小傘接杯	2
X1-31	一體式避震器上支座	4	X3GT-43	碳纖三角板組	1 set
XT-09B	中央傳動軸125.5mm(FR)	1	X3GT-45	CNC 前下擺臂固定座(後+6°)	1
XT-22	避震器塑膠件	1 set	X3GT-46	CNC 後上反角固定座(+2°)	1
XT-31	中差座塑膠模	1 set	X3GT-47	CNC 7075-3mm 輕量底盤	1
X3-01	蝸型大傘齒 43t	1	X3GT-48	碳纖前支撐架	1
X3-02	蝸型大傘齒 13t	1	X3GT-49	碳纖後支撐架	1
X3-03	差速傘齒(粉末) 10Tx2 20Tx2	1 set	X3GT-50	鋁合金後支撐架固定座(黑)	1
X3-04A	前CVD傳動軸, 107.5mm	2	X3GT-51	鋁合金中差上蓋	1
X3-05A	後CVD傳動軸, 105mm	2	X3GT-52	鋁合金伺服機座	2
X3-06	CVD 結合軸 / 2.5 x12.8 滾針	4	X3GT-53	鋁合金緩衝組搖臂	1
X3-07	CVD輪軸	2	X3GT-57	碳纖風扇固定座	1
X3-13	3.5mm x 45.8mm 後輪座軸心	2	X3GT-58	中央傳動軸 81.5mm (FF)	1
X3-14	轉向座大王銷	4	X3.6-07	4x67.6mm圓頭擺臂軸	2
X3-16	緩衝組支柱	2	X3.6-13B	鋁固定座	2
X3-17	緩衝組鋁管	1	#155B	車殼插梢	4
X3-19	緩衝組調整O環 / 12 x 1.7 O環	1 set	#267D	8x16 培林	8
X3-20-BK	緩衝組連接板 B (黑)	1	#267E	2.5 x 16.8 滾針	4
X3-21	緩衝組彈簧調整螺絲	2	#277A	5x8x2.5 凸緣培林	2
X3-22	緩衝組襯套	2	#294D	46T塑膠大直齒	1
X3-31	7x8.5mm球型座	4	#309B	正牙六角螺帽	1
X3-32	7x12mm球型座	4	#312-BK	伺服片(黑)	1set
X3-34	2.5x11.8 滾針	10	#363	鋁合金4mm十字軸	6
X3-35	2.5x12.8 滾針	10	#387C-BK	16mm避震器上蓋(黑)	4
X3-38	差速器防漏墊片 31x20x0.3	3	#387D-BK	16mm避震器調整環(黑)	4
X3-43	差速殼	1	#387E	10x1mm O環	4
X3-45	前下擺臂塑膠模 (L. R)	1set	#387F	19x1.5mm O環	4
X3-45B	擺臂襯套	4	#387G	彈簧止座塑膠模	1set
X3-46	傾角調整套	1set	#387P	16mm避震器活塞模	1set
X3-47	轉向座塑膠模 (L. R)	1set	#387S	16mm避震器修理包	1set
X3-50	拉桿球頭塑膠模	1set	#388	16mm避震器用氣室 桔色	4
X3-51	緩衝組/三角板塑膠模	1set	#397-17	17T馬達齒 5mm, M1	1set
X3-53	後下擺臂塑膠模 (L. R)	1set	#415BK	CNC 鋁合金馬達座(二件式)	1set
X3-61	8x14 培林	4	#416	16mm GT避震器彈簧組, 2.3mm	1set
X3-62	13x20 培林	4	#418A	前避震軸心, 45mm	2
X3-82	前後防撞板模	1set	#418B-G	16mm外牙筒身	2
X3-84	車殼柱模	1set	#445	電池固定帶(魔鬼粘)	2
X3-89	後防傾桿2.8mm	1	#446	天線管座	1
X3S-04	輕量差速接杯	2	#447	電池固定座	1set
X3S-15-BK	加寬1.9mm六角輪座(黑)	2			
X3S-19	CNC 鋁合金C座, 10度	1 set			
X3S-37A	5x16 培林	2			





X3 **GT**  
2023  

# HONG NOR

Hong Nor Hobbies International Co., Ltd.



8F.,No.184, Sec. 4,Chengde Rd., Shihlin Dist.,  
Taipei 11167, Taiwan  
TEL: 886 2-2888-1221  
FAX: 886 2-2883-3533  
[www.hongnor-racing.com](http://www.hongnor-racing.com)

**THIS IS NOT A TOY !**

- DO NOT USE WITH CHILDREN YOUNGER THAN 16YEARS.
- ENGINE/MOTOR, ELECTRONICS/RADIO INSTRUCTIONS MUST READ BEFORE START.